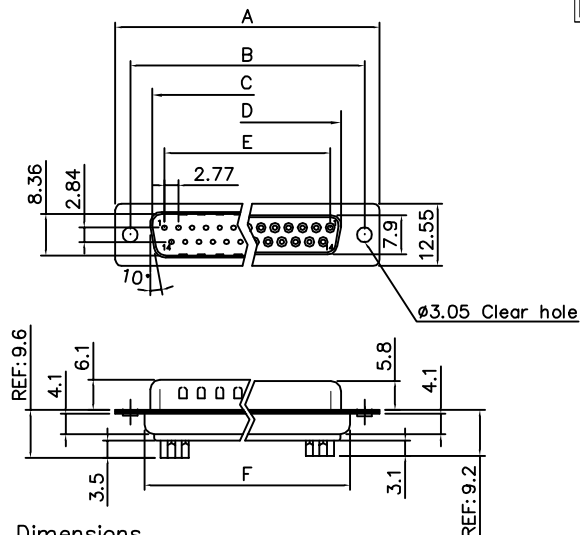


THE INFORMATION CONTAINED IN THIS DOCUMENT IS PROPRIETARY TO Y-S ELECTRONIC, ANY REPRODUCTION IN PART OR WHOLE WITHOUT PRIOR WRITTEN APPROVAL OR AUTHORIZATION OF Y-S ELECTRONIC IS STRICTLY PROHIBITED.

RoHS COMPLIANT

REVISIONS				
REV	ECN NO.	DESCRIPTION	APPROVED BY	DATE
A				



Dimensions

Positions	A	B	C	D	E	F
9	30.81	24.99	16.92	16.33	11.08	19.20
15	39.14	33.32	25.50	24.66	19.39	27.70
25	53.04	47.04	38.96	38.38	33.24	41.10
37	69.32	63.50	55.42	54.84	49.86	57.30

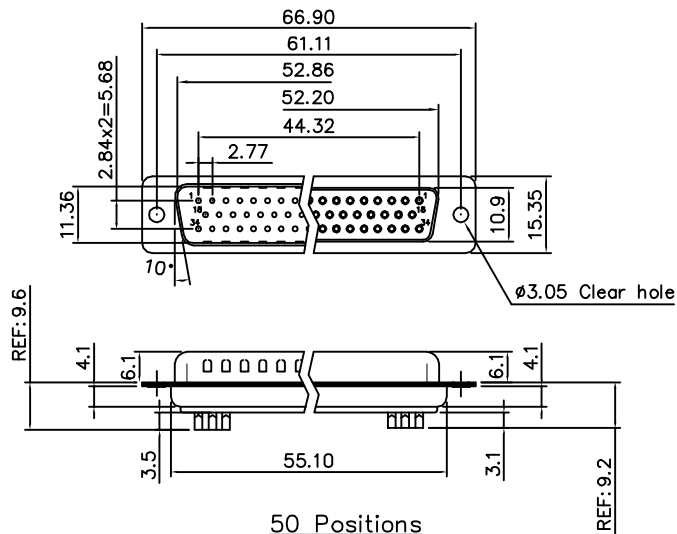
Product Specification

Material

Insulator : Glass-Filled Thermoplastic PBT,UL94V-0
 Contact : Brass
 Shell : Steel, 100u" Tin Over 50u" min Copper
 Clinch Nut : Brass, Nickel Plated
 Boardlock : Brass, Tin Plated
 Screwlock : Brass, Nickel Plated

Electrical

Contact Resistance : 20 milliohms
 Max at 1 AMP DC.
 Insulation Resistance : 1000
 megohms at 500 VDC
 Dielectric Withstanding Voltage :
 1000 VAC/rms 60Hz for 1 minute
 Current Rating : 3 AMP
 Volatge Rating : 250 VAC/rms 60Hz



50 Positions

DO NOT SCALE DRAWING

DIMENSIONS: <input type="checkbox"/> MM [INCH] <input type="checkbox"/> INCH [mm] <input checked="" type="checkbox"/> MM ONLY	CAD GENERATED DRAWING, DO NOT MANUALLY UPDATE DRAWN BY AND DATE JUSTIN XING 11-21-05	<p>Y-S ELECTRONIC CO., LTD. No. 101, Sec. 1, Long-An Street, Lu-Chu, Taoyuan, Taiwan, R.O.C. TEL: +886-3-3609819 FAX: +886-3-3609817</p>	
UNLESS OTHERWISE SPECIFIED, GENERAL TOLERANCE: DECIMALS ANGLES X. ±0.38 [0.015] X° ±3° .X ±0.25 [0.010] .X° ±1.0° .XX ±0.13 [0.005]	CHECKED BY AND DATE JUSTIN XING 11-21-05 APPROVED BY AND DATE KING CHIU 11-21-05 THIRD ANGLE PROJECTION		TITLE 100 SERIES D-SUB SOLDER TYPE
MATERIAL		DRAWING NO. 100-XXXXXXXXXX	REV A
FINISH	SCALE: 1 : 1 SIZE: A3	FILE NO.	SHEET 1 OF 3

THE INFORMATION CONTAINED IN THIS DOCUMENT IS PROPRIETARY TO Y-S ELECTRONIC, ANY REPRODUCTION IN PART OR WHOLE WITHOUT PRIOR WRITTEN APPROVAL OR AUTHORIZATION OF Y-S ELECTRONIC IS STRICTLY PROHIBITED.

RoHS COMPLIANT

Ordering Information

100 - $\frac{XX}{a}$ $\frac{X}{b}$ $\frac{X}{c}$ $\frac{X}{d}$ $\frac{X}{e}$ $\frac{X}{f}$ $\frac{X}{g}$ $\frac{X}{h}$ $\frac{X}{i}$ $\frac{X}{j}$ $\frac{X}{k}$

REVISIONS				
REV	ECN NO.	DESCRIPTION	APPROVED BY	DATE
A				

a.No.Of Pins

- 09: 09 positions
- 15: 15 positions
- 25: 25 positions
- 37: 37 positions
- 50: 50 positions

b.Contact Type:

- 1:Male
- 2:Female

c.Contact Plating :

- 0.Gold flash selective gold
- 1.5u"selective gold on contact
- 2.10u"selective gold on contact
- 3.15u"selective gold on contact
- 4.30u"selective gold on contact
- 5.50u"selective gold on contact
- 6.Gold flash full gold
- 7.Full tin

d.Shell plating :

- 0. Cr⁺³yellow chrome
- 1.Nickel
- 2.Tin(standard)
- 3.Cr⁺⁶yellow chrome
- 4.Gold flash
- 5.Tin, not dimple
- 6.Cr⁺⁶yellow chrome,dimple
- 7.Tin tab shell, dimple
- 8.Special tin plating, dimple
- 9. Cr⁺³yellow chrome, dimple
- A. Nickel, ul& csa logo

e.Insulator Color :

- 1:Blue
- 2:Black(standard)
- 3:White
- 4:Gray
- 5:Green
- 6:Pc99 blue
- 7.Pc99 green
- 8.Pc99 yellow
- 9:Black(high temperature)

f.Position of clinch nut(reffer to page 3/4 for detail)

- 0.Clear hole ϕ 3.05mm
- 1.Rivet front 5.9mm
- 2.Rear rivet, 5.9mm
- 3.Standoff+2 prong boardlock6.0*3.2mm
- 4.Front rivet,2.0mm
- 5.Front rivet,2.5mm
- 6.Front rivet,4.0mm
- 7.Rear rivet, 2.0mm
- 8.Rear rivet, 2.5mm
- 9.Rear rivet, 4.0mm
- A.Front rivet,5.0mm
- B.Rear rivet,5.0mm

g.Flange Mounting Option

- 0. ϕ 3.05mm clear hole
- 1. #4-40 threaded hole
- 2. #4-40 threaded hole with #4-40 unc(5*10mm)screwlock installed
- 3. #4-40 threaded hole wite #4-40 unc(5*10mm)screwlock buld-packed
- 4. M3 threaded hole
- 5. #4-40 threaded hole with M3(5*10mm)screwlock installed
- 6. M2.6 threaded hole
- 7. #4-40 threaded hole with M2.6(5*10mm)screwlock installed
- 8. #4-40unc serewlock(4.75*7.5mm, not thru)
- 9. #4-40 threaded hole with #4-40 unc(4.8*10.0mm)screwlock installed
- A. #4-40 threaded hole with #4-40 unc(5.8*10.8mm)screwlock installed
- B. #4-40 threaded hole with M3(5.8*10.8mm)screwlock installed
- C.#4-40 threaded hole with screw locking type with round #4-40 unc(6.1*11.94mm)
- D. #4-40 threaded hole with #4-40 unc(4.8*11.8mm)screwlock buld-packed

h. Pin type

- 1. Stamped pin
- 2. Machined pin
- 3. Stamped pin+shorting 18-25pin
- 4. Machined pin+shorting

i.Ferrite :

- 0.Without ferrite
- 1.With ferrite


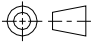
j. Insulator type

- N:Economical type

k.Pin Removal Options

- X: Pin #9 removed
- Y: Pin #4 and #9 removed
- Z: Pin #4, #9 and #11 removed
- B: Pin #17, #18, #38, #39 and #59 removed
- V: Pin #1removed

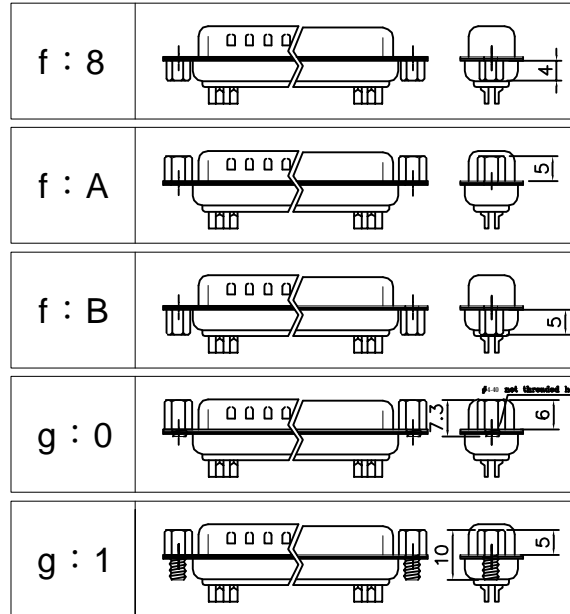
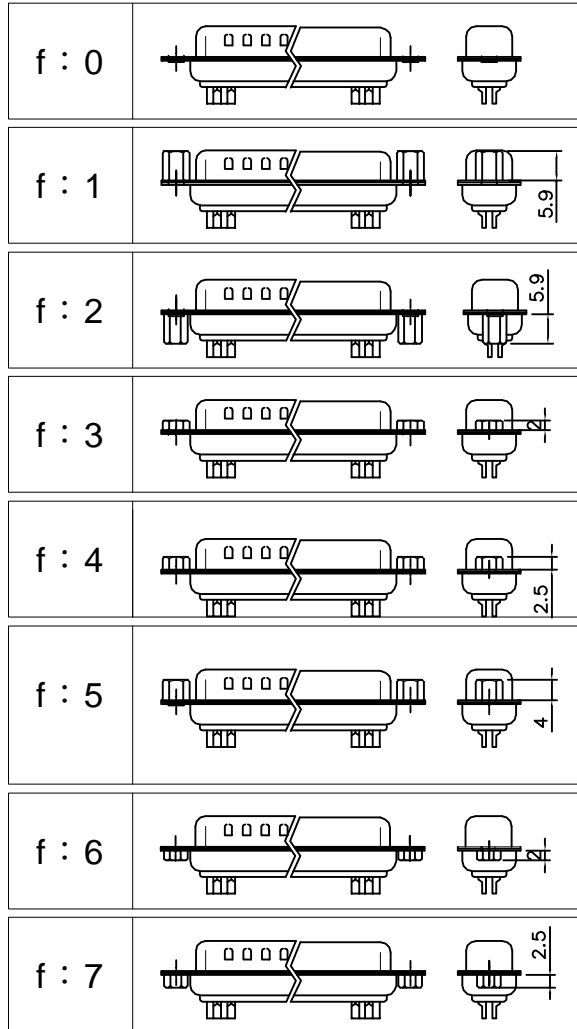
DO NOT SCALE DRAWING

DIMENSIONS: <input type="checkbox"/> MM [INCH] <input type="checkbox"/> INCH [mm] <input checked="" type="checkbox"/> MM ONLY		CAD GENERATED DRAWING, DO NOT MANUALLY UPDATE DRAWN BY AND DATE JUSTIN XING 11-21-05		 Y-S ELECTRONIC CO., LTD. No. 101, Sec. 1, Long-An Street, Lu-Chu, Taoyuan, Taiwan, R.O.C. TEL: +886-3-3609819 FAX: +886-3-3609817
UNLESS OTHERWISE SPECIFIED, GENERAL TOLERANCE: DECIMALS ANGLES X. ± 0.38 [0.015] X° $\pm 3^\circ$.X ± 0.25 [0.010] .X° $\pm 1.0^\circ$.XX ± 0.13 [0.005]		CHECKED BY AND DATE JUSTIN XING 11-21-05 APPROVED BY AND DATE KING CHIU 11-21-05 THIRD ANGLE PROJECTION		
MATERIAL: _____ FINISH: _____				TITLE 100 SERIES D-SUB SOLDER TYPE
		DRAWING NO. _____ REV _____ 100-XXXXXXXXXX A		
		SCALE: 1 : 1 SIZE: A3		FILE NO.: _____ SHEET 2 OF 3

THE INFORMATION CONTAINED IN THIS DOCUMENT IS PROPRIETARY TO Y-S ELECTRONIC, ANY REPRODUCTION IN PART OR WHOLE WITHOUT PRIOR WRITTEN APPROVAL OR AUTHORIZATION OF Y-S ELECTRONIC IS STRICTLY PROHIBITED.

RoHS COMPLIANT

REVISIONS				
REV	ECN NO.	DESCRIPTION	APPROVED BY	DATE
A				



CONSULT SALES OR
FACTORY FOR OTHER
MOUNTING STYLE OPTIONS

DO NOT SCALE DRAWING

DIMENSIONS:	
<input type="checkbox"/> MM [INCH]	<input type="checkbox"/> INCH [mm]
<input checked="" type="checkbox"/> MM ONLY	
UNLESS OTHERWISE SPECIFIED, GENERAL TOLERANCE:	
DECIMALS	ANGLES
X. ±0.38 [0.015]	X° ±3°
.X ±0.25 [0.010]	.X° ±1.0°
.XX ±0.13 [0.005]	
MATERIAL	
FINISH	

CAD GENERATED DRAWING, DO NOT MANUALLY UPDATE	
DRAWN BY AND DATE JUSTIN XING 11-21-05	
CHECKED BY AND DATE JUSTIN XING 11-21-05	
APPROVED BY AND DATE KING CHIU 11-21-05	
THIRD ANGLE PROJECTION	
SCALE: 1 : 1	SIZE: A3



Y-S ELECTRONIC CO., LTD.
No. 101, Sec. 1, Long-An Street,
Lu-Chu, Taoyuan, Taiwan, R.O.C.
TEL: +886-3-3609819 FAX: +886-3-3609817

TITLE	
100 SERIES D-SUB SOLDER TYPE	
DRAWING NO. 100-XXXXXXXXXX	REV A
FILE NO.	SHEET 3 OF 3