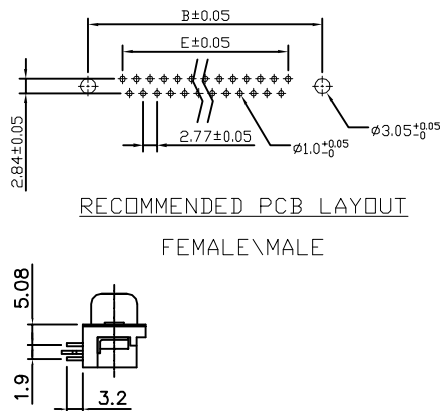
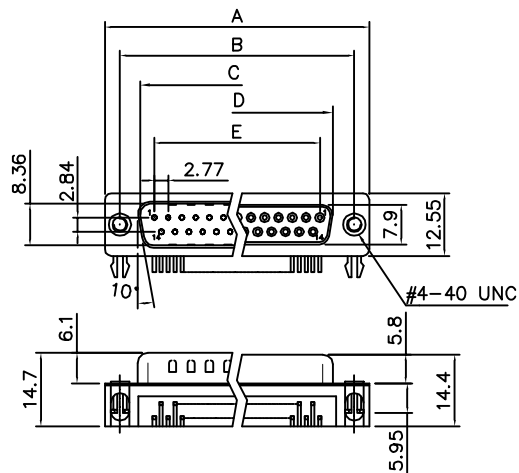


THE INFORMATION CONTAINED IN THIS DOCUMENT IS PROPRIETARY TO Y-S ELECTRONIC, ANY REPRODUCTION IN PART OR WHOLE WITHOUT PRIOR WRITTEN APPROVAL OR AUTHORIZATION OF Y-S ELECTRONIC IS STRICTLY PROHIBITED.

**RoHS COMPLIANT**

REVISIONS				
REV	ECN NO.	DESCRIPTION	APPROVED BY	DATE
A				



5.08mm Footprint

Dimensions					
Positions	A	B	C	D	E
9	30.81	24.99	16.92	16.33	11.08
15	39.14	33.32	25.50	24.66	19.39
25	53.04	47.04	38.96	38.38	33.24
37	69.32	63.50	55.42	54.84	49.86

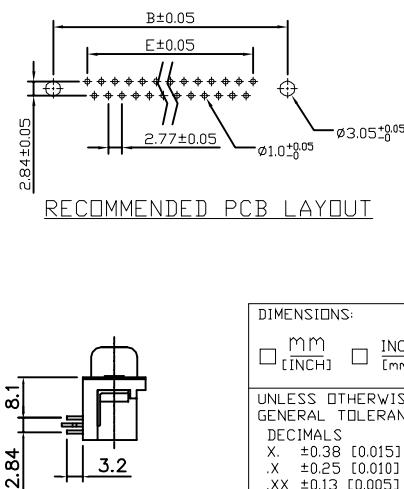
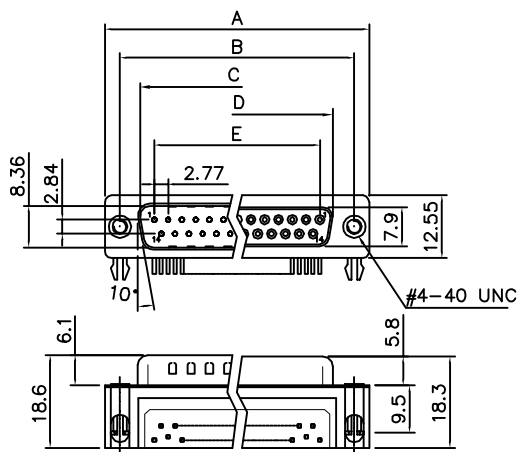
Product Specification

Material

Insulator : Glass-Filled Thermoplastic PBT, UL94V-0  
 Contact : Brass  
 Shell : Steel, 100u" Tin Over 50u" min Copper  
 Clinch Nut : Brass, Nickel Plated.  
 Boardlock : Brass, Tin Plated.  
 Screwlock : Brass, Nickel Plated.

Electrical

Contact Resistance : 20 milliohms  
 Max at 1 AMP DC.  
 Insulation Resistance : 1000  
 megohms at 500 VDC  
 Dielectric Withstanding Voltage :  
 1000 VAC/rms 60Hz for 1 minute  
 Current Rating : 3 AMP  
 Voltage Rating : 250 VAC/rms 60Hz



7.2mm Footprint

DO NOT SCALE DRAWING

DIMENSIONS:	
<input type="checkbox"/> mm [INCH]	<input type="checkbox"/> INCH [mm]
<input checked="" type="checkbox"/> mm ONLY	<input type="checkbox"/> ONLY
UNLESS OTHERWISE SPECIFIED, GENERAL TOLERANCE:	
DECIMALS	ANGLES
X. ±0.38 [0.015]	X° ±3°
.X ±0.25 [0.010]	.X° ±1.0°
.XX ±0.13 [0.005]	
MATERIAL	
FINISH	

CAD GENERATED DRAWING, DO NOT MANUALLY UPDATE
DRAWN BY AND DATE JUSTIN XING 12-19-05
CHECKED BY AND DATE JUSTIN XING 12-19-05
APPROVED BY AND DATE KING CHIU 12-19-05
THIRD ANGLE PROJECTION
SCALE: 1 : 1
SIZE: A3



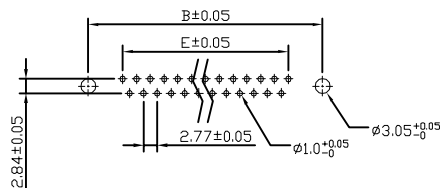
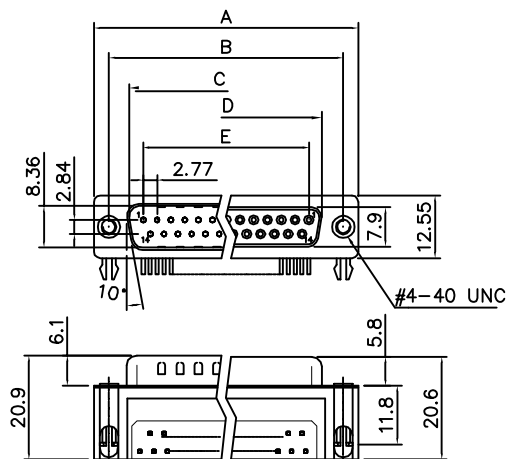
**Y-S ELECTRONIC CO., LTD.**  
 No. 101, Sec. 1, Long-An Street,  
 Lu-Chu, Taoyuan, Taiwan, R.O.C.  
 TEL: +886-3-3609819 FAX: +886-3-3609817

TITLE	
107 SERIES D-SUB, RIGHT ANGLE TYPE	
DRAWING NO.	REV
107-XXXXXXXXXX	A
FILE NO.	SHEET 1 OF 7

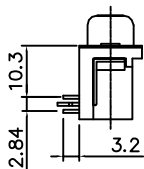
THE INFORMATION CONTAINED IN THIS DOCUMENT IS PROPRIETARY TO Y-S ELECTRONIC, ANY REPRODUCTION IN PART OR WHOLE WITHOUT PRIOR WRITTEN APPROVAL OR AUTHORIZATION OF Y-S ELECTRONIC IS STRICTLY PROHIBITED.

RoHS COMPLIANT

REVISIONS				
REV	ECN NO.	DESCRIPTION	APPROVED BY	DATE
A				



RECOMMENDED PCB LAYOUT  
FEMALE/MALE



9.4mm Footprint

Dimensions					
Positions	A	B	C	D	E
9	30.81	24.99	16.92	16.33	11.08
15	39.14	33.32	25.50	24.66	19.39
25	53.04	47.04	38.96	38.38	33.24
37	69.32	63.50	55.42	54.84	49.86

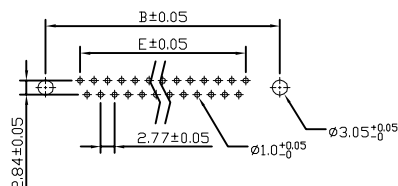
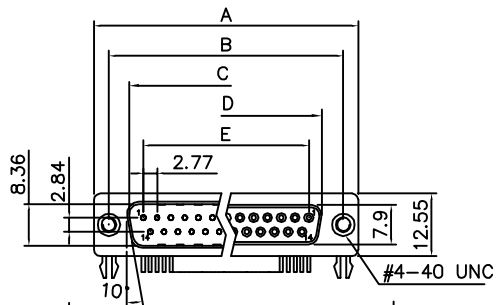
Product Specification

Material

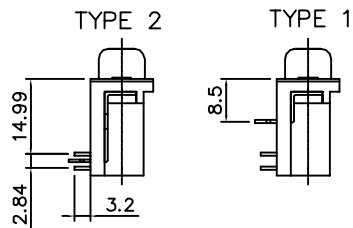
Insulator : Glass-Filled Thermoplastic PBT, UL94V-0  
 Contact : Brass  
 Shell : Steel, 100u" Tin Over 50u" min Copper  
 Clinch Nut : Brass, Nickel Plated.  
 Boardlock : Brass, Tin Plated.  
 Screwlock : Brass, Nickel Plated.

Electrical

Contact Resistance : 20 milliohms  
 Max at 1 AMP DC.  
 Insulation Resistance : 1000  
 megohms at 500 VDC  
 Dielectric Withstanding Voltage :  
 1000 VAC/rms 60Hz for 1 minute  
 Current Rating : 3 AMP  
 Voltage Rating : 250 VAC/rms 60Hz



RECOMMENDED PCB LAYOUT



13.84mm Footprint

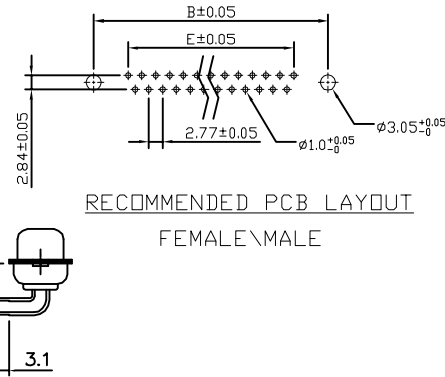
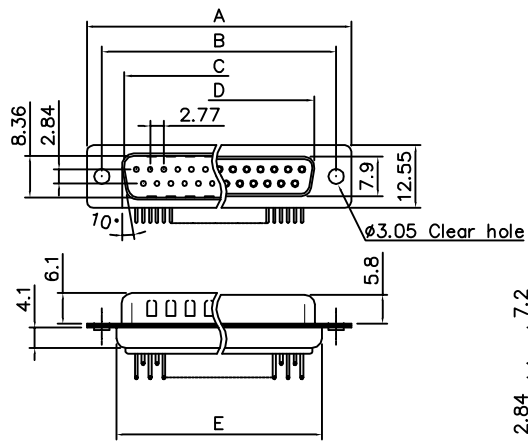
DO NOT SCALE DRAWING

DIMENSIONS: <input type="checkbox"/> MM [INCH] <input type="checkbox"/> INCH [mm] <input checked="" type="checkbox"/> MM ONLY	CAD GENERATED DRAWING, DO NOT MANUALLY UPDATE	
	DRAWN BY AND DATE JUSTIN XING 12-19-05	
UNLESS OTHERWISE SPECIFIED, GENERAL TOLERANCE: DECIMALS      ANGLES .X   ±0.38 [0.015]   X°   ±3° .XX   ±0.25 [0.010]   .X°   ±1.0° .XX   ±0.13 [0.005]	CHECKED BY AND DATE JUSTIN XING 12-19-05	
	APPROVED BY AND DATE KING CHIU 12-19-05	
MATERIAL  FINISH	THIRD ANGLE PROJECTION 	
	SCALE: 1 : 1	SIZE: A3



**Y-S ELECTRONIC CO., LTD.**  
 No. 101, Sec. 1, Long-An Street,  
 Lu-Chu, Taoyuan, Taiwan, R.O.C.  
 TEL: +886-3-3609819 FAX: +886-3-3609817

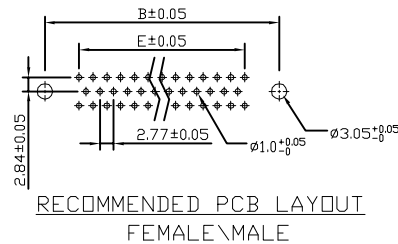
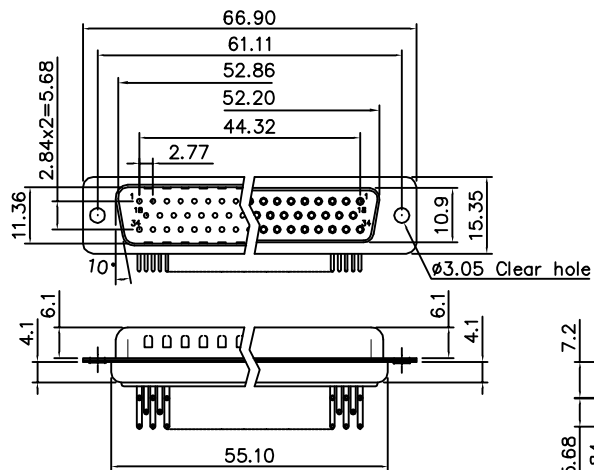
TITLE	
107 SERIES D-SUB, RIGHT ANGLE TYPE	
DRAWING NO.	REV
107-XXXXXXXXXX	A
FILE NO.	SHEET 2 OF 7



7.2mm Footprint Machined Pin (W/O Rear Cover)

Dimensions

Positions	A	B	C	D	E
9	30.81	24.99	16.92	16.33	19.20
15	39.14	33.32	25.50	24.66	27.70
25	53.04	47.04	38.96	38.38	41.10
37	69.32	63.50	55.42	54.84	57.30



50 Positions Machined Pin (W/O Rear Cover)

Product Specification

Material

Insulator : Glass-Filled Thermoplastic PBT, UL94V-0

Contact : Brass

Shell : Steel, 100u" Tin Over 50u" min Copper

Clinch Nut : Brass, Nickel Plated.

Boardlock : Brass, Tin Plated.

Screwlock : Brass, Nickel Plated.

Electrical

Contact Resistance : 20 milliohms  
Max at 1 AMP DC.

Insulation Resistance : 1000  
magohms at 500 VDC

Dielectric Withstanding Voltage :  
1000 VAC/rms 60Hz for 1 minute

Current Rating : 3 AMP

Volatge Rating : 250 VAC/rms 60Hz

DO NOT SCALE DRAWING

DIMENSIONS:	
<input type="checkbox"/> mm [INCH]	<input type="checkbox"/> INCH [mm]
<input type="checkbox"/> mm ONLY	<input checked="" type="checkbox"/> mm ONLY
UNLESS OTHERWISE SPECIFIED, GENERAL TOLERANCE:	
DECIMALS	ANGLES
X ±0.38 [0.015]	X° ±3°
.X ±0.25 [0.010]	.X° ±1.0°
XX ±0.13 [0.005]	
MATERIAL	
FINISH	

CAD GENERATED DRAWING, DO NOT MANUALLY UPDATE	
DRAWN BY AND DATE JUSTIN XING 12-19-05	
CHECKED BY AND DATE JUSTIN XING 12-19-05	
APPROVED BY AND DATE KING CHIU 12-19-05	
THIRD ANGLE PROJECTION	
SCALE: 1 : 1	SIZE: A3



**Y-S ELECTRONIC CO., LTD.**

No. 101, Sec. 1, Long-An Street,  
Lu-Chu, Taoyuan, Taiwan, R.O.C.  
TEL: +886-3-3609819 FAX: +886-3-3609817

TITLE	
107 SERIES D-SUB RIGHT ANGLE TYPE	
DRAWING NO. 107-XXXXXXXXXX	REV A
FILE NO.	SHEET 3 OF 7

1

2

3

4

5

6

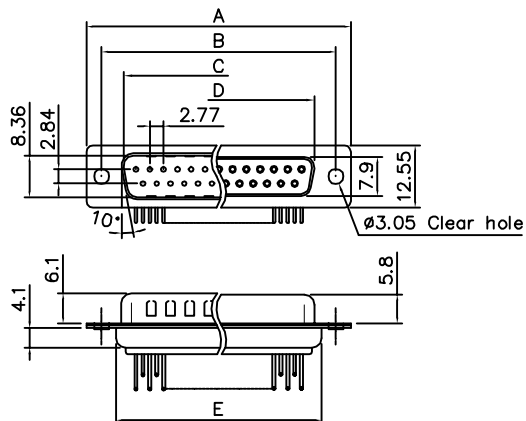
7

8

THE INFORMATION CONTAINED IN THIS DOCUMENT IS PROPRIETARY TO Y-S ELECTRONIC, ANY REPRODUCTION IN PART OR WHOLE WITHOUT PRIOR WRITTEN APPROVAL OR AUTHORIZATION OF Y-S ELECTRONIC IS STRICTLY PROHIBITED.

RoHS COMPLIANT

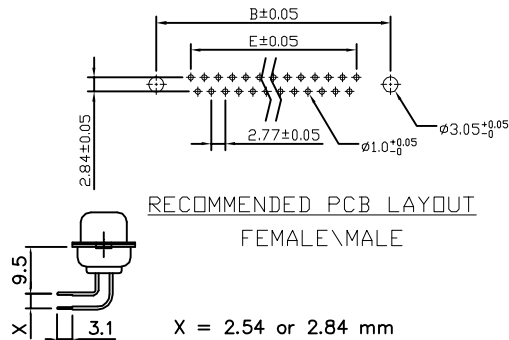
REVISIONS				
REV	ECN NO.	DESCRIPTION	APPROVED BY	DATE
A				



9.4mm Footprint Machined Pin (W/O Rear Cover)

Dimensions

Positions	A	B	C	D	E
9	30.81	24.99	16.92	16.33	19.20
15	39.14	33.32	25.50	24.66	27.70
25	53.04	47.04	38.96	38.38	41.10
37	69.32	63.50	55.42	54.84	57.30



RECOMMENDED PCB LAYOUT  
FEMALE\MALE

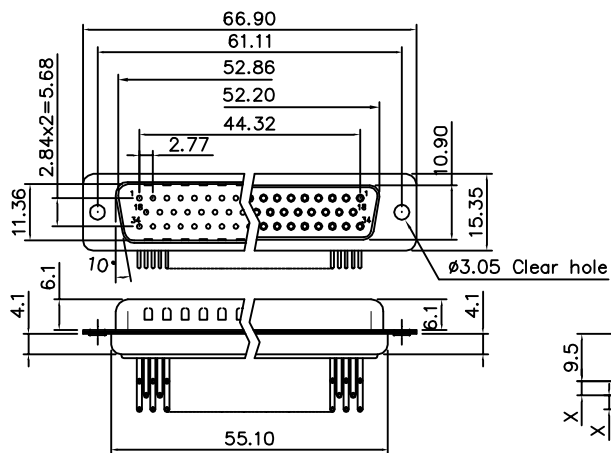
Product Specification

Material

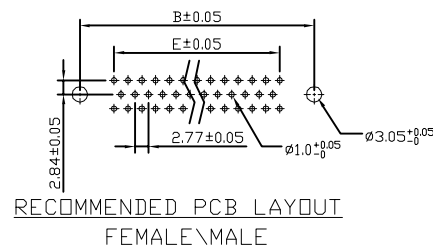
Insulator : Glass-Filled Thermoplastic PBT, UL94V-0  
 Contact : Brass  
 Shell : Steel, 100u" Tin Over 50u" min Copper  
 Clinch Nut : Brass, Nickel Plated.  
 Boardlock : Brass, Tin Plated.  
 Screwlock : Brass, Nickel Plated.

Electrical

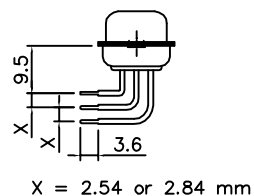
Contact Resistance : 20 milliohms  
 Max at 1 AMP DC.  
 Insulation Resistance : 1000  
 megohms at 500 VDC  
 Dielectric Withstanding Voltage :  
 1000 VAC/rms 60Hz for 1 minute  
 Current Rating : 3 AMP  
 Voltage Rating : 250 VAC/rms 60Hz



50 Positions Machined Pin (W/O Rear Cover)



RECOMMENDED PCB LAYOUT  
FEMALE\MALE



X = 2.54 or 2.84 mm

DO NOT SCALE DRAWING

DIMENSIONS: <input type="checkbox"/> MM [INCH] <input type="checkbox"/> INCH [mm] <input checked="" type="checkbox"/> MM ONLY	CAD GENERATED DRAWING, DO NOT MANUALLY UPDATE DRAWN BY AND DATE JUSTIN XING 12-19-05
UNLESS OTHERWISE SPECIFIED, GENERAL TOLERANCE: DECIMALS      ANGLES X .±0.38 [0.015]   X° ±3° .X ±0.25 [0.010]   .X° ±1.0° .XX ±0.13 [0.005]	CHECKED BY AND DATE JUSTIN XING 12-19-05 APPROVED BY AND DATE KING CHIU 12-19-05 THIRD ANGLE PROJECTION
MATERIAL	
FINISH	
SCALE: 1 : 1	SIZE: A3

**Y-S ELECTRONIC CO., LTD.**  
 No. 101, Sec. 1, Long-An Street,  
 Lu-Chu, Taoyuan, Taiwan, R.O.C.  
 TEL: +886-3-3609819 FAX: +886-3-3609817

TITLE 107 SERIES D-SUB RIGHT ANGLE TYPE	
DRAWING NO. 107-XXXXXXXXXX	REV A
FILE NO.	SHEET 4 OF 7

THE INFORMATION CONTAINED IN THIS DOCUMENT IS PROPRIETARY TO Y-S ELECTRONIC, ANY REPRODUCTION IN PART OR WHOLE WITHOUT PRIOR WRITTEN APPROVAL OR AUTHORIZATION OF Y-S ELECTRONIC IS STRICTLY PROHIBITED.

**RoHS COMPLIANT**

REVISIONS				
REV	ECN NO.	DESCRIPTION	APPROVED BY	DATE
A				

Ordering Information

107 -  $\frac{XX}{a} \frac{X}{b} \frac{X}{c} \frac{X}{d} \frac{X}{e} \frac{X}{f} \frac{X}{g} \frac{X}{h} \frac{X}{i} \frac{X}{j}$

a. No. Of Contacts:

- 09: 09 positions
- 15: 15 positions
- 25: 25 positions
- 37: 37 positions
- 50: 50 positions

b. Gender

- 1: Male
- 2: Female

c. Contact Plating

- 0: Gold flash selective gold
- 1: 1.5u"selective gold on contact
- 2: 10u"selective gold on contact
- 3: 15u"selective gold on contact
- 4: 30u"selective gold on contact
- 5: 50u"selective gold on contact
- 6: Gold flash full gold
- 7: Gold flash selective gold add plating
- 8: Full tin

d. Shell plating :

- 0. Cr<sup>+3</sup>yellow chrome
- 1. Nickel
- 2. Tin(standard)
- 3. Cr<sup>+6</sup>yellow chrome
- 4. Gold flash
- 5. Tin, not dimple
- 6. Cr<sup>+6</sup>yellow chrome, dimple
- 7. Special tin, dimple
- 8. Cr<sup>+3</sup>yellow chrome, dimple

e. Insulator Color

- 1: Blue
- 2: Black
- 3: White
- 4: Gray
- 5: Green
- 6: Black(high temperature)
- 7: PC99 red
- 8: PC99 yellow

f. Rivetting Options :

- 0: None
- 1: L-shaped, single screw thread
- 2: L-shaped, double screw thread #4-40unc
- 3: Z字片+2 prong boardlock
- 4: Z字片+4 prong boardlock
- 5: L-shaped, M3
- 6: L-shaped, clear hole
- 7: Plastic, L-shaped+Z字片 2 prong boardlock
- 8: Plastic, L-shaped bracket(suspend machined pin)
- 9: L-shaped full include(13.84mm)
- A: L-shaped half include(13.84mm)
- B: L-shaped full include(7.2mm)
- C: Z字片+2 prong boardlock(matte tin)
- D: Z字片+4 prong boardlock(matte tin)
- E: Rear rivet, 4.0mm

g. Flange Mounting Option :

- 0:  $\phi$ 3.05mm clear hole
- 1: #4-40 threaded hole
- 2: #4-40 threaded hole with #4-40 unc(4.8\*11.8mm)screwlock installed
- 3: #4-40 threaded hole with #4-40 unc(4.8\*11.8mm)screwlock buld-packed
- 4: M3 threaded hole
- 5: #4-40 threaded hole with M3(4.8\*11.8mm)screwlock installed
- 6: M2.6 threaded hole
- 7: #4-40 threaded hole with M2.6(4.8\*11.8mm)screwlock installed
- 8: #4-40 threaded hole with screw locking type #4-40 unc(4.80\*11.80mm)
- 9: Front round rivet, #4-40 unc
- A: #4-40 threaded hole with pan head screw(cross slot) screwlock installed
- B: #4-40 threaded hole with #4-40 unc(6.2\*11.8mm)screwlock installed
- C: #4-40 threaded hole with M2.6(5.8\*11.8mm)screwlock installed
- D: #4-40 threaded hole with M3(4.8\*11.8mm)screwlock installed+flat washer
- E: #4-40 threaded hole with M3(5.0\*13.0mm)screwlock installed
- F: #4-40 threaded hole with M2.6(5.8\*11.8mm)screwlock installed
- G: #4-40 threaded hole with #4-40 unc(5.8\*10.8mm)screwlock installed
- H: M3 boardlock
- I: #4-40 threaded hole with #4-40 unc(5.8\*11.8mm)screwlock installed
- J: #4-40 threaded hole with #4-40 unc(4.8\*11.8mm)screwlock installed+flat washer
- K: Front hex rivet, 5.9mm(M3)
- L: #4-40 threaded hole with screw locking type M3(5.8\*11.8mm)
- M: Front hex rivet, 5.9mm (#4-40 unc)
- N: #4-40 unc boardlock installed
- P: Front hex rivet(5.0mm), M3
- Q: #4-40 threaded hole with screw locking type M3(5.8\*10.8mm)
- R: #4-40 threaded hole with screw locking type #4-40 unc(5.8\*10.8mm)
- S: Front nuts #4-40unc with round #4-40 unc(6.1\*11.94mm)screwlock installed
- T: #4-40 threaded hole with round #4-40 unc(5.0\*10.0mm)screwlock installed
- U: #4-40 threaded hole with screw locking type with round #4-40 unc(6.1\*11.94mm)

h. Contact Type :

- 1: Stamped contact
- 2: Machined contact
- 3: Machined contact(with shaped plastic)


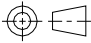
i. Ferrite Options :

- 0: With out
- 1: With

j. Footprint :

- 1: 7.2mm footprint
- 2: 9.4mm footprint
- 3: 13.84mm footprint Typ 1 (plastic long ejector, rivet 7.2mm)
- 4: 13.84mm footprint Typ 2 (plastic long ejector)
- 5: 5.08mm footprint
- 7: 13.84mm footprint Typ 3 (plastic short ejector)

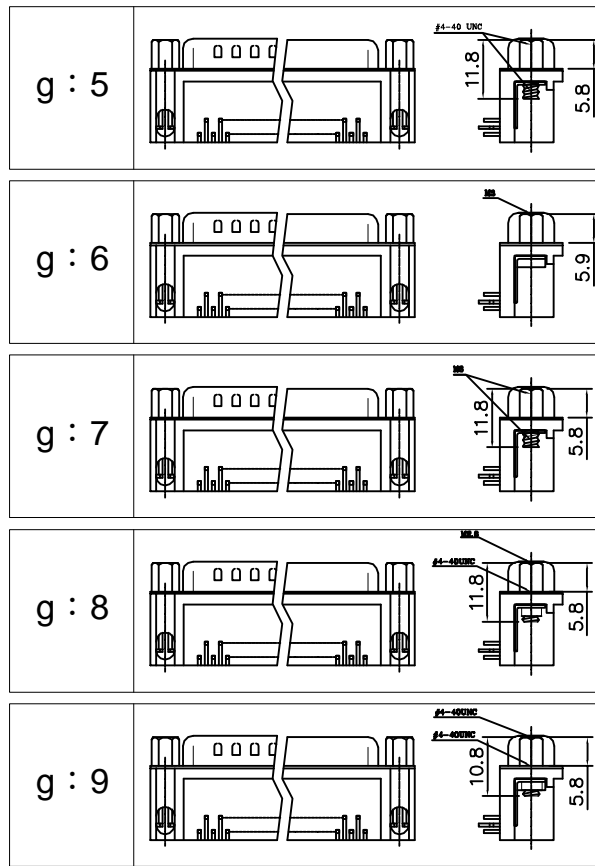
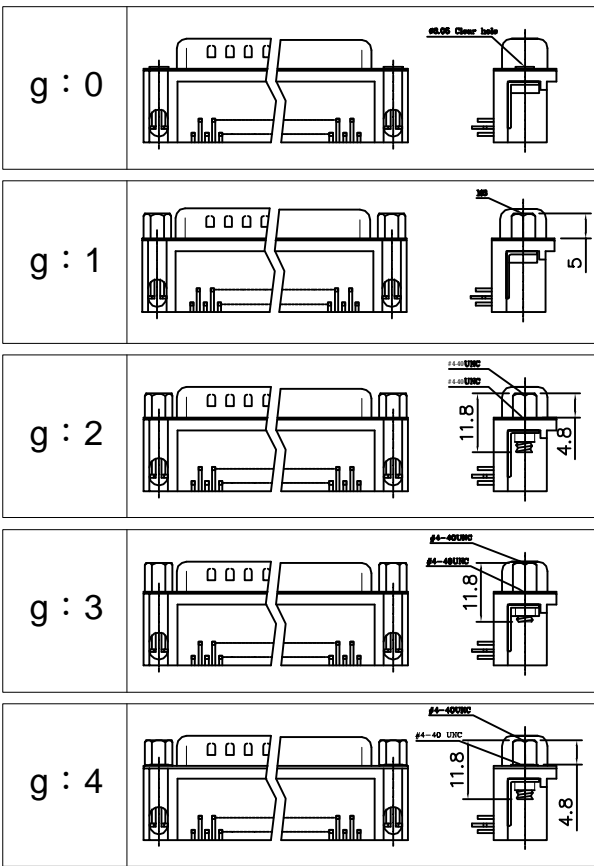
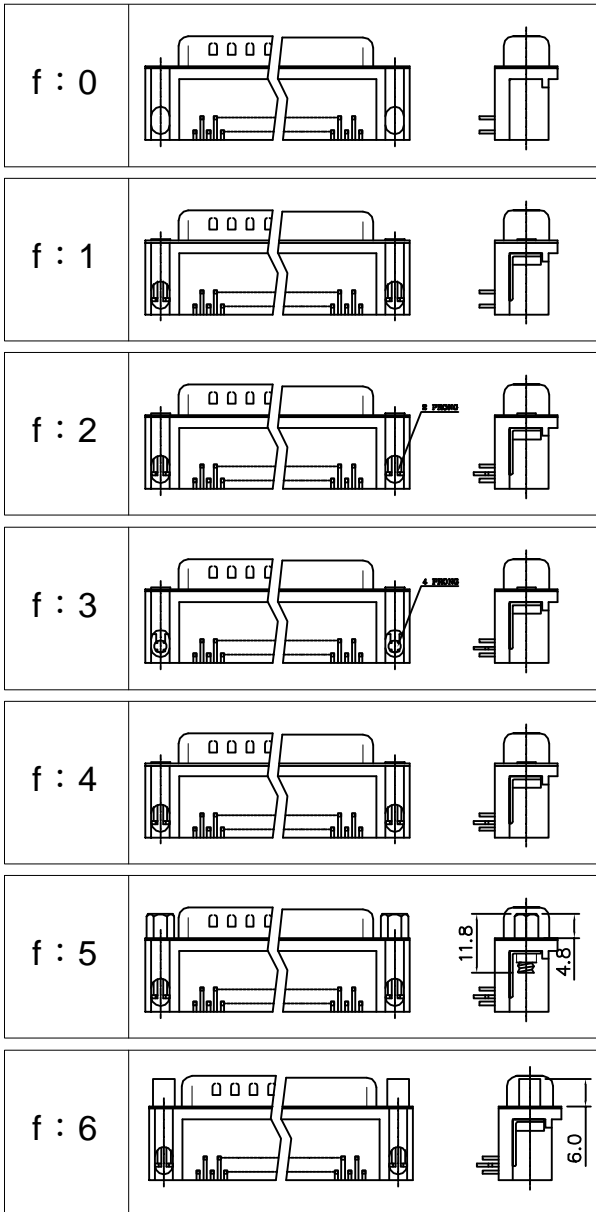
DO NOT SCALE DRAWING

DIMENSIONS: <input type="checkbox"/> MM [INCH] <input type="checkbox"/> INCH [mm] <input checked="" type="checkbox"/> MM ONLY	CAD GENERATED DRAWING, DO NOT MANUALLY UPDATE DRAWN BY AND DATE JUSTIN XING 07-20-06	 <b>Y-S ELECTRONIC CO., LTD.</b> No. 101, Sec. 1, Long-An Street, Lu-Chu, Taoyuan, Taiwan, R.O.C. TEL: +886-3-3609819 FAX: +886-3-3609817	
	UNLESS OTHERWISE SPECIFIED, GENERAL TOLERANCE: DECIMALS                      ANGLES X. $\pm 0.38$ [0.015]            X° $\pm 3^\circ$ .X $\pm 0.25$ [0.010]            .X° $\pm 1.0^\circ$ .XX $\pm 0.13$ [0.005]		CHECKED BY AND DATE JUSTIN XING 07-20-06 APPROVED BY AND DATE KING CHIU 07-20-06 THIRD ANGLE PROJECTION
MATERIAL		DRAWING NO.	REV
FINISH		SCALE: 1 : 1	107-XXXXXXXXXX
	SIZE: A3	FILE NO.:	SHEET 5 OF 7

THE INFORMATION CONTAINED IN THIS DOCUMENT IS PROPRIETARY TO Y-S ELECTRONIC, ANY REPRODUCTION IN PART OR WHOLE WITHOUT PRIOR WRITTEN APPROVAL OR AUTHORIZATION OF Y-S ELECTRONIC IS STRICTLY PROHIBITED.

RoHS COMPLIANT

REVISIONS				
REV	ECN NO.	DESCRIPTION	APPROVED BY	DATE
A				



DO NOT SCALE DRAWING

DIMENSIONS: <input type="checkbox"/> MM [INCH] <input type="checkbox"/> INCH [MM] <input checked="" type="checkbox"/> MM ONLY		CAD GENERATED DRAWING, DO NOT MANUALLY UPDATE DRAWN BY AND DATE JUSTIN XING 12-19-05	
UNLESS OTHERWISE SPECIFIED, GENERAL TOLERANCE: DECIMALS      ANGLES X   ±0.38 [0.015]    X°   ±3° .X   ±0.25 [0.010]    .X°   ±1.0° .XX ±0.13 [0.005]		CHECKED BY AND DATE JUSTIN XING 12-19-05 APPROVED BY AND DATE KING CHIU 12-19-05 THIRD ANGLE PROJECTION	
MATERIAL			
FINISH		SCALE: 1 : 1	SIZE: A3



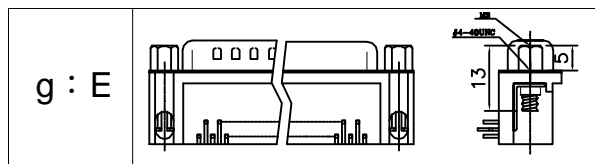
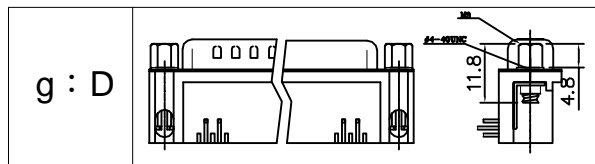
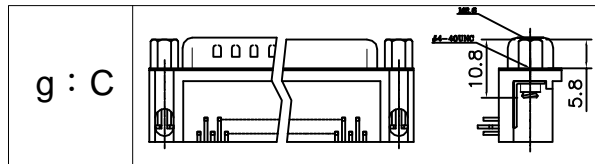
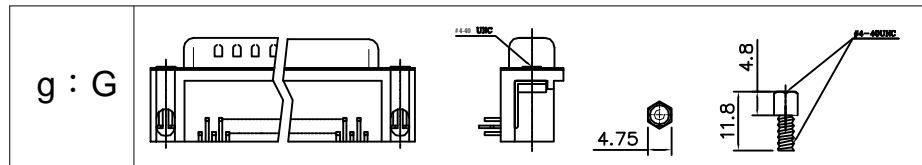
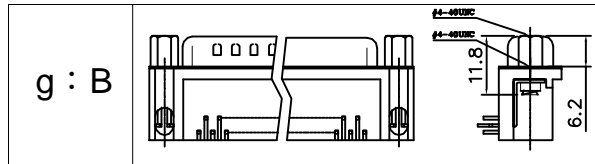
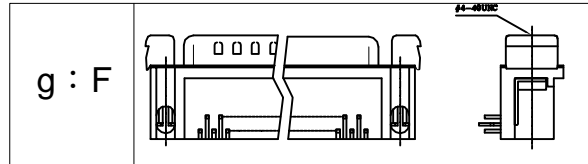
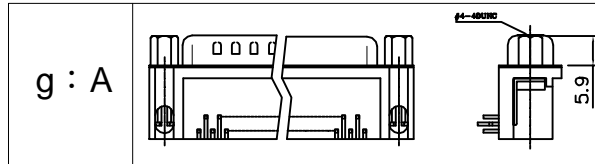
**Y-S ELECTRONIC CO., LTD.**  
 No. 101, Sec. 1, Long-An Street,  
 Lu-Chu, Taoyuan, Taiwan, R.O.C.  
 TEL: +886-3-3609819 FAX: +886-3-3609817

TITLE 107 SERIES D-SUB, RIGHT ANGLE TYPE	
DRAWING NO. 107-XXXXXXXXXX	REV A
FILE NO.:	SHEET 6 OF 7

THE INFORMATION CONTAINED IN THIS DOCUMENT IS PROPRIETARY TO Y-S ELECTRONIC, ANY REPRODUCTION IN PART OR WHOLE WITHOUT PRIOR WRITTEN APPROVAL OR AUTHORIZATION OF Y-S ELECTRONIC IS STRICTLY PROHIBITED.

RoHS COMPLIANT

REVISIONS				
REV	ECN NO.	DESCRIPTION	APPROVED BY	DATE
A				



DO NOT SCALE DRAWING

DIMENSIONS:  
 MM [INCH]  INCH [mm]  MM ONLY

UNLESS OTHERWISE SPECIFIED, GENERAL TOLERANCE:  
 DECIMALS ANGLES  
 X. ±0.38 [0.015] X° ±3°  
 .X ±0.25 [0.010] .X° ±1.0°  
 .XX ±0.13 [0.005]

MATERIAL

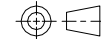
FINISH

CAD GENERATED DRAWING, DO NOT MANUALLY UPDATE  
 DRAWN BY AND DATE  
 JUSTIN XING 12-19-05

CHECKED BY AND DATE  
 JUSTIN XING 12-19-05

APPROVED BY AND DATE  
 KING CHIU 12-19-05

THIRD ANGLE PROJECTION



SCALE: 1 : 1

SIZE: A3



**Y-S ELECTRONIC CO., LTD.**  
 No. 101, Sec. 1, Long-An Street,  
 Lu-Chu, Taoyuan, Taiwan, R.O.C.  
 TEL: +886-3-3609819 FAX: +886-3-3609817

TITLE  
 107 SERIES D-SUB,  
 RIGHT ANGLE TYPE

DRAWING NO. 107-XXXXXXXXXX

FILE NO. SHEET 7 OF 7

REV  
 A