

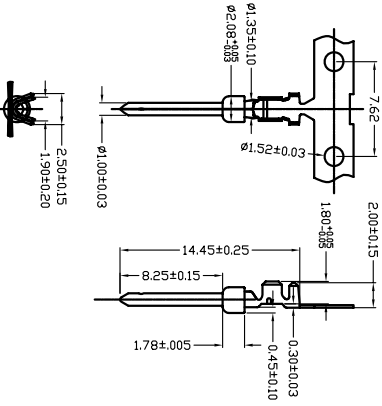
THE INFORMATION CONTAINED IN THIS DOCUMENT IS PROPRIETARY TO Y-S ELECTRONIC. ANY REPRODUCTION IN PART OR WHOLE WITHOUT PRIOR WRITTEN APPROVAL OR AUTHORIZATION OF Y-S ELECTRONIC IS STRICTLY PROHIBITED.

ROHS COMPLIANT

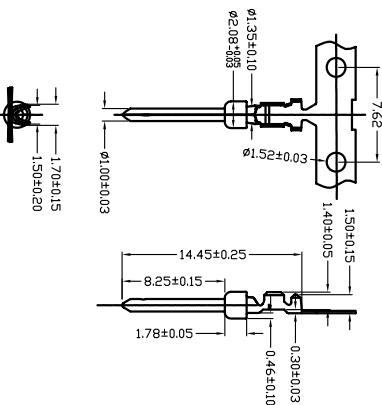
REV	ECN NO.	DESCRIPTION	APPROVED BY	DATE
G	A	A0603471	KING CHIU	2006-03-28

REVISONS

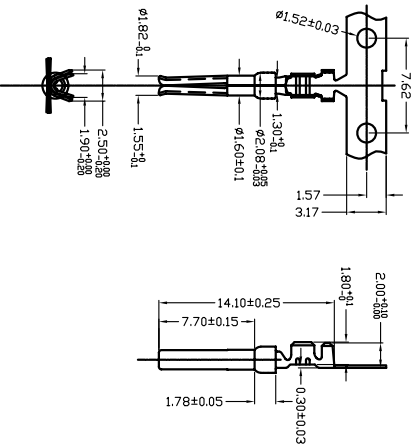
CRIMP High feet female terminal



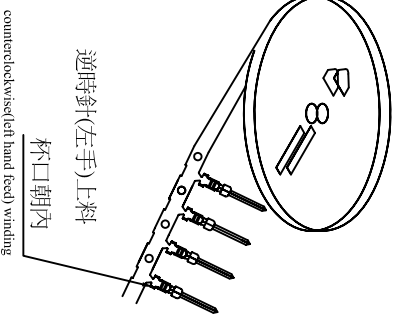
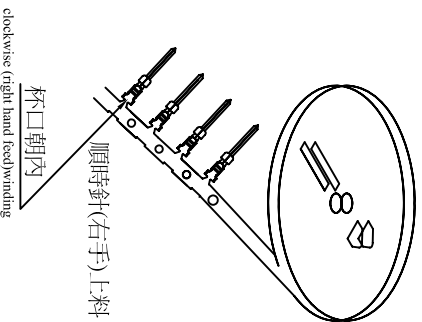
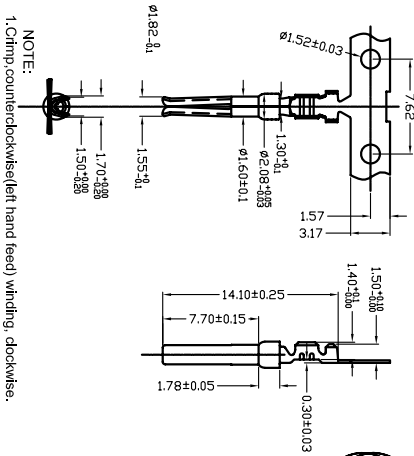
CRIMP Low feet female terminal



CRIMP High feet female terminal



CRIMP Low feet female terminal



102 TERMINAL SERIES CRIMP TYPE Ordering Information

- Series No: 102
- Contact Type: 1 Male, 2 Female
- Contact Plating: 1. MATERIAL: 9.99% COPPER 1/2 MATERIAL, 3.00% PLATED 15% BERRY COPPER 1/2 GOLD PLATED 15% 4.00% PLATED 30% BERRY COPPER 1/2 GOLD PLATED 30% 5.00% PLATED 15% BERRY COPPER 1/2 GOLD 15% 6.00% PLATED 30% BERRY COPPER 1/2 GOLD 15% 8.00% PLATED 30% BERRY COPPER 1/2 GOLD 15%
- Go up material Type: L:left hand go up material R:right hand go up material Straight direction
- Apply bound: 1. Apply 20-25micron(1mil feet) 2. Apply 25-28micron(1mil feet)
- OUTPUT TRAY TYPE: 1.***** 2.10K/TRAY

NO	PART NO.	DESCRIPTION	QTY	UNIT
10	CARDBOARD/D011 5*7(CM)inside carton(A3)		2/400	PCS
9	PE BAG/2*4*10(CM)MIN		1/100	PCS
8	CARTON/N22*24.5*20(CM)(A3A)100PCS PACKING		XX/K	PCS
7	CARTON/46*55*22.5CM (outside any padding)40PCS OR 100PCS PACKING		XX/K	PCS
6	CARDBOARD/0590(CM)(A3)		2/10K	PCS
5	CARTON/54*54*20(CM)(A3)B	10K PACKING	1/8	TRAY
4	STYROFOAM 04.5*0.7(CM)inside carton*2.5CM	5K PACKING	1	PCS
3	CARDBOARD/0570(CM)(A3)		2/5K	PCS
2	CARTON/38*38*30(CM)(A3)B	2K PACKING	1/10	TRAY
1	TERMINAL/Comp 01.0mm XX		1/5K	TRAY

NOTE:
 1. Crimp counter-clockwise(left hand feed) winding, clockwise. (right hand feed)winding.
 2. Use the white foam rubber (30 silk)(hengfeng brand) to gather the acetic acid ethylene lotion styrofoam and cardboard.
 3. No transparent tape is allowed to upper and lower cardboard.

FINISH	SCALE	SIZE	FILE NO.	DRAWING NO.	REV
	NINE	A3		102-XXXXX	G

Y-S ELECTRONIC CO., LTD.
 No. 101, Sec. 1, Long-An Street,
 Lu-Cnru, Taoyuan, Taiwan, R.O.C.
 TEL: +886-3-3609819 FAX: +886-3-3609817

TITLE
 102 SERIES
 D-SUB CRIMP TERMINAL

DO NOT SCALE DRAWING

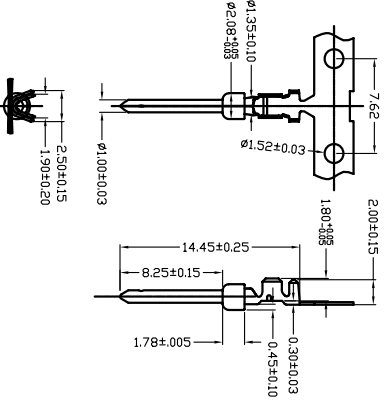
THE INFORMATION CONTAINED IN THIS DOCUMENT IS PROPRIETARY TO Y-S ELECTRONIC. ANY REPRODUCTION IN PART OR WHOLE WITHOUT PRIOR WRITTEN APPROVAL OR AUTHORIZATION OF Y-S ELECTRONIC IS STRICTLY PROHIBITED.

ROHS COMPLIANT

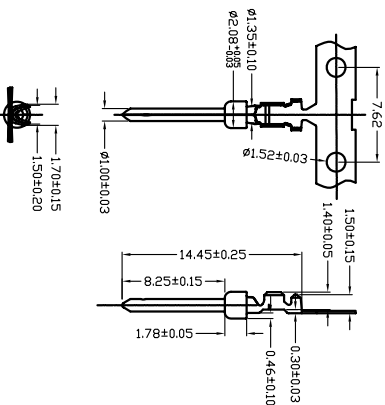
REV	ECN NO.	DESCRIPTION	APPROVED BY	DATE
G	A	A0603471	KING CHIU	2006-03-28

REVISONS

CRIMP High feet female terminal



CRIMP Low feet female terminal



102 TERMINAL SERIES CRIMP TYPE

Ordering Information

102 -



系列型號

配合型式

1:公

2:母

電鍍形式

1: 素材

2: 半金1U"

3: 半金15U"

4: 半金30U"

5: 全金1U"

6: 全金15U"

7: 全金50U"

8: 半金50U"

上料方式

L: 左手上料 N: 沒有方向

R: 右手上料

適用範圍

1: 適用20-24AWG(高腳)

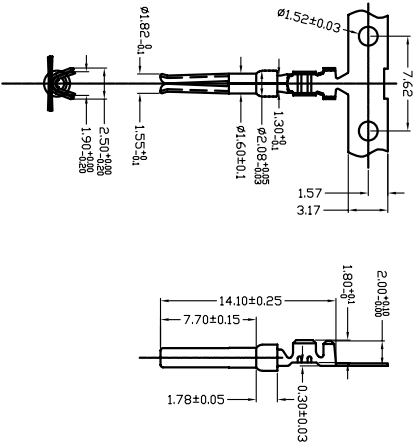
2: 適用24-28AWG(低腳)

裝盤方式

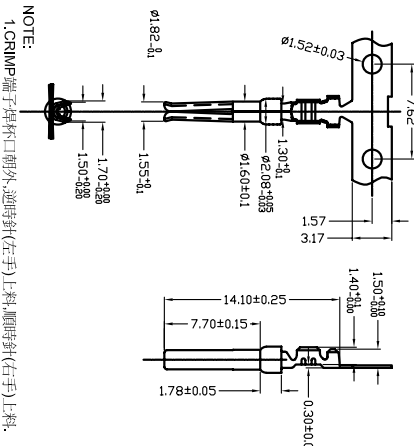
1: *****

2: 10K/盤

CRIMP High feet female terminal



CRIMP Low feet female terminal



NOTE:

1. CRIMP端子焊杯口朝外, 逆時針(左手)上料, 順時針(右手)上料.
2. 用白乳膠030貼(個個轉角)將膠體之漆乳液粘貼保護能與紙板.
3. 圓錐周圍不能粘貼透明膠紙.

DIMENSIONS:

<input type="checkbox"/> mm	<input type="checkbox"/> INCH	<input checked="" type="checkbox"/> mm	<input checked="" type="checkbox"/> INCH
<input type="checkbox"/> [INCH]	<input type="checkbox"/> [mm]	<input checked="" type="checkbox"/> ONLY	<input checked="" type="checkbox"/> ONLY

UNLESS OTHERWISE SPECIFIED, GENERAL TOLERANCE:

DECIMALS	ANGLES
X ±0.28 [0.015]	X° ±3°
X ±0.25 [0.010]	X° ±1.0°
XX ±0.13 [0.005]	

MATERIAL

FINISH

Y-S ELECTRONIC CO., LTD.
No. 101, Sec. 1, Long-An Street,
Lu-Chu, Taoyuan, Taiwan, R.O.C.
TEL: +886-3-3609819 FAX: +886-3-3609817

102 SERIES
D-SUB CRIMP TERMINAL

DRAWING NO.

102-XXXXX

FILE NO.

102-XXXXX

REV G

SHEET 1 OF 1

DO NOT SCALE DRAWING

