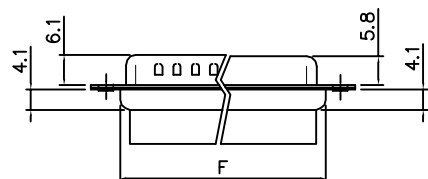
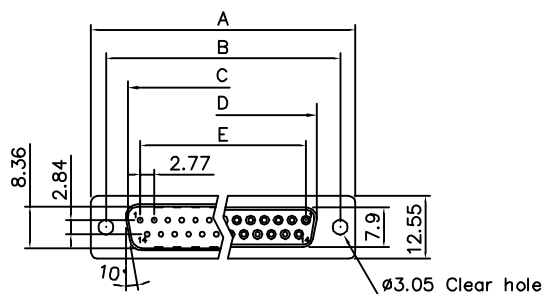


THE INFORMATION CONTAINED IN THIS DOCUMENT IS PROPRIETARY TO Y-S ELECTRONIC, ANY REPRODUCTION IN PART OR WHOLE WITHOUT PRIOR WRITTEN APPROVAL OR AUTHORIZATION OF Y-S ELECTRONIC IS STRICTLY PROHIBITED.

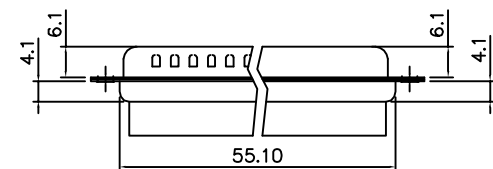
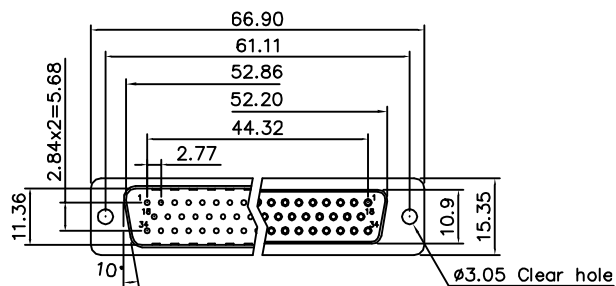
RoHS COMPLIANT

REVISIONS				
REV	ECN NO.	DESCRIPTION	APPROVED BY	DATE
A				



Dimensions

Positions	A	B	C	D	E	F
9	30.81	24.99	16.92	16.33	11.08	19.20
15	39.14	33.32	25.50	24.66	19.39	27.70
25	53.04	47.04	38.96	38.38	33.24	41.10
37	69.32	63.50	55.42	54.84	49.86	57.30



50 Positions

Product Specification

Material

Insulator : Glass-Filled Thermoplastic PBT, UL94V-0

Insulator Color : Black

Shell : Steel, 100u" Tin Over 50u" min Copper

Clinch Nut : Brass, Nickel Plated.

Screwlock : Brass, Nickel Plated.

Electrical

Insulation Resistance : 1000

megohms at 500 VDC

Dielectric Withstanding Voltage :

1000 VAC/rms 60Hz for 1 minute

DO NOT SCALE DRAWING

DIMENSIONS: <input type="checkbox"/> MM [INCH] <input type="checkbox"/> INCH [mm] <input checked="" type="checkbox"/> MM ONLY	CAD GENERATED DRAWING, DO NOT MANUALLY UPDATE DRAWN BY AND DATE JUSTIN XING 10-20-05	
	CHECKED BY AND DATE JOHN HE 11-20-05	
UNLESS OTHERWISE SPECIFIED, GENERAL TOLERANCE: DECIMALS    ANGLES .X ±0.38 [0.015]    X° ±3° .X ±0.25 [0.010]    .X° ±1.0° .XX ±0.13 [0.005]	APPROVED BY AND DATE JASON ZHUANG 11-20-05 THIRD ANGLE PROJECTION	
MATERIAL	SCALE: 1:1	SIZE: A3
FINISH	FILE NO.:	

**Y-S ELECTRONIC CO., LTD.**  
 No. 101, Sec. 1, Long-An Street,  
 Lu-Chu, Taoyuan, Taiwan, R.O.C.  
 TEL: +886-3-3609819 FAX: +886-3-3609817

TITLE		REV
102 SERIES D-SUB HOUSING CRIMP TYPE		
DRAWING NO.	102-XXXXXX	A
FILE NO.:	SHEET 1 OF 3	

THE INFORMATION CONTAINED IN THIS DOCUMENT IS PROPRIETARY TO Y-S ELECTRONIC, ANY REPRODUCTION IN PART OR WHOLE WITHOUT PRIOR WRITTEN APPROVAL OR AUTHORIZATION OF Y-S ELECTRONIC IS STRICTLY PROHIBITED.

REVISIONS				
REV	ECN NO.	DESCRIPTION	APPROVED BY	DATE
A				

**RoHS COMPLIANT**

Ordering Information

102 -  $\frac{XX}{a}$   $\frac{X}{b}$   $\frac{X}{c}$   $\frac{X}{d}$   $\frac{X}{e}$

a. No. Of Pins

- 09: 09 positions
- 15: 15 positions
- 25: 25 positions
- 37: 37 positions
- 50: 50 positions

b. Contact Type:

- 1: Male
- 2: Female

c. Shell plating :

- 0. Cr<sup>+3</sup> yellow chrome
- 1. Nickel
- 2. Tin (standard)
- 3. Cr<sup>+6</sup> yellow chrome
- 4. Gold flash
- 5. Tin, not dimple
- 6. Cr<sup>+6</sup> yellow chrome, dimple
- 7. Tin tab shell, dimple
- 8. Special tin, dimple
- 9. Cr<sup>+3</sup> yellow chrome, dimple

d. Position of clinch nut


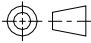
- 0. Clear hole  $\phi$  3.05mm
- 1. Rivet front 5.9mm
- 2. Rear rivet, 5.9mm
- 3. Rivet board lock

- A. Front rivet, 2.0mm
- B. Front rivet, 2.5mm
- C. Front rivet, 4.0mm
- D. Rear rivet, 2.0mm
- E. Rear rivet, 2.5mm
- F. Rear rivet, 4.0mm
- G. Rivet tab shell

e. Flange Mounting Option

- 0.  $\phi$  3.05mm clear hole
- 1. #4-40 threaded hole
- 2. #4-40 threaded hole with #4-40 unc(5\*10mm) screwlock installed
- 3. #4-40 threaded hole with #4-40 unc(5\*10mm) screwlock buld-packed
- 4. M3 threaded hole
- 5. #4-40 threaded hole with M3(5\*10mm) screwlock installed
- 6. M2.6 threaded hole
- 7. #4-40 threaded hole with M2.6(5\*10mm) screwlock installed
- 8. #4-40 threaded hole with #4-40 unc(5.8\*10.8mm) screwlock installed
- 9. #4-40 threaded hole with M3(5.8\*10.8mm) screwlock installed
- B. Straight rivet  $\phi$  4.0mm

DO NOT SCALE DRAWING

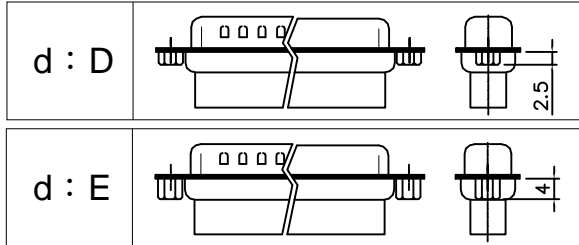
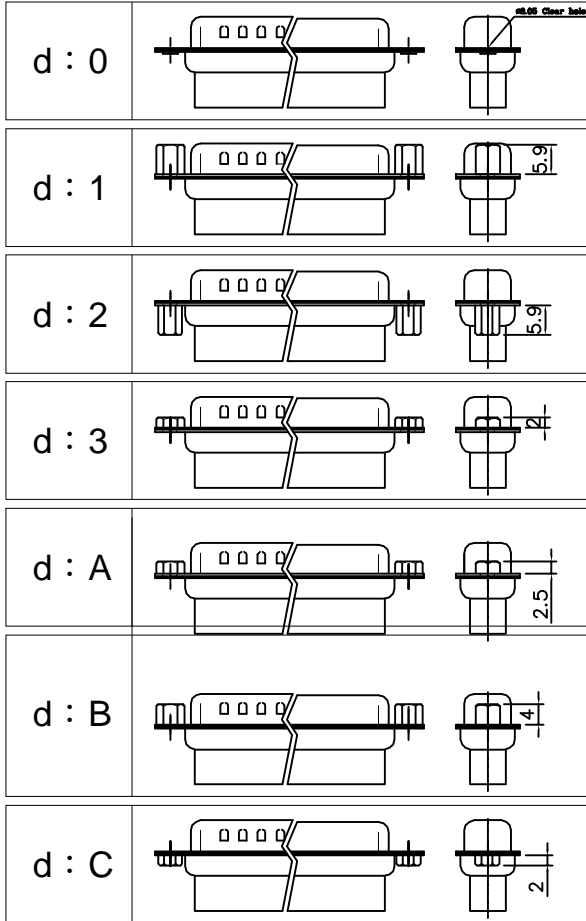
DIMENSIONS: <input type="checkbox"/> MM [INCH] <input type="checkbox"/> INCH [mm] <input checked="" type="checkbox"/> MM ONLY		CAD GENERATED DRAWING, DO NOT MANUALLY UPDATE DRAWN BY AND DATE JUSTIN XING 07-20-06		 <b>Y-S ELECTRONIC CO., LTD.</b> No. 101, Sec. 1, Long-An Street, Lu-Chu, Taoyuan, Taiwan, R.O.C. TEL: +886-3-3609819 FAX: +886-3-3609817	
UNLESS OTHERWISE SPECIFIED, GENERAL TOLERANCE: DECIMALS      ANGLES X. $\pm 0.38$ [0.015]   X° $\pm 3^\circ$ .X $\pm 0.25$ [0.010]   .X° $\pm 1.0^\circ$ .XX $\pm 0.13$ [0.005]		CHECKED BY AND DATE JUSTIN XING 07-20-06 APPROVED BY AND DATE KING CHIU 07-20-06 THIRD ANGLE PROJECTION		TITLE 102 SERIES D-SUB HOUSING CRIMP TYPE	
MATERIAL				DRAWING NO. 102-XXXXXX	
FINISH		SCALE: 1 : 1      SIZE: A3		REV A	
FILE NO.:				SHEET 2 OF 3	

THE INFORMATION CONTAINED IN THIS DOCUMENT IS PROPRIETARY TO Y-S ELECTRONIC, ANY REPRODUCTION IN PART OR WHOLE WITHOUT PRIOR WRITTEN APPROVAL OR AUTHORIZATION OF Y-S ELECTRONIC IS STRICTLY PROHIBITED.

RoHS COMPLIANT


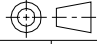
REVISIONS

REV	ECN NO.	DESCRIPTION	APPROVED BY	DATE
A				



CONSULT SALES OR  
FACTORY FOR OTHER  
MOUNTING STYLE OPTIONS

DO NOT SCALE DRAWING

DIMENSIONS: <input type="checkbox"/> mm [INCH] <input type="checkbox"/> INCH [mm] <input checked="" type="checkbox"/> mm ONLY		CAD GENERATED DRAWING, DO NOT MANUALLY UPDATE		 <b>Y-S ELECTRONIC CO., LTD.</b> No. 101, Sec. 1, Long-An Street, Lu-Chu, Taoyuan, Taiwan, R.O.C. TEL: +886-3-3609819 FAX: +886-3-3609817	
UNLESS OTHERWISE SPECIFIED, GENERAL TOLERANCE: DECIMALS    ANGLES .X ±0.38 [0.015]    X° ±3° .X ±0.25 [0.010]    .X° ±1.0° .XX ±0.13 [0.005]		CHECKED BY AND DATE JUSTIN XING 10-20-05 APPROVED BY AND DATE KING CHIU 10-20-05 THIRD ANGLE PROJECTION			TITLE <b>102 SERIES</b> <b>D-SUB HOUSING CRIMP TYPE</b>
MATERIAL FINISH				DRAWING NO. 102-XXXXXX	
		SCALE: 1 : 1	SIZE: A3	FILE NO.:	SHEET 3 OF 3