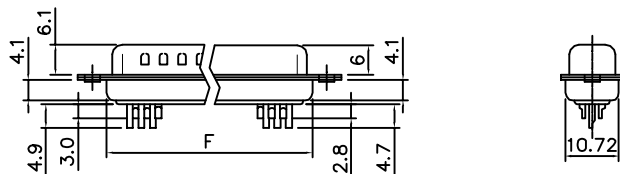
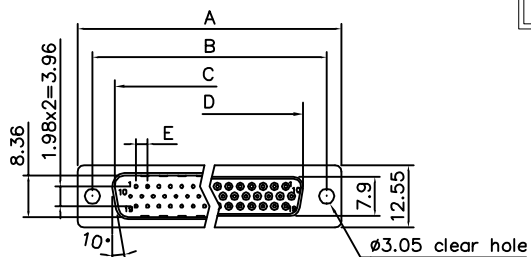


THE INFORMATION CONTAINED IN THIS DOCUMENT IS PROPRIETARY TO Y-S ELECTRONIC, ANY REPRODUCTION IN PART OR WHOLE WITHOUT PRIOR WRITTEN APPROVAL OR AUTHORIZATION OF Y-S ELECTRONIC IS STRICTLY PROHIBITED.

RoHS COMPLIANT

REVISIONS				
REV	ECN NO.	DESCRIPTION	APPROVED BY	DATE
A				



Dimensions

Positions	A	B	C	D	E	F
15	30.81	24.99	16.92	16.33	2.29	19.20
26	39.14	33.32	25.50	24.66	2.29	27.70
44	53.04	47.04	38.96	38.38	2.29	41.10
62	69.32	63.50	55.42	54.84	2.41	57.30

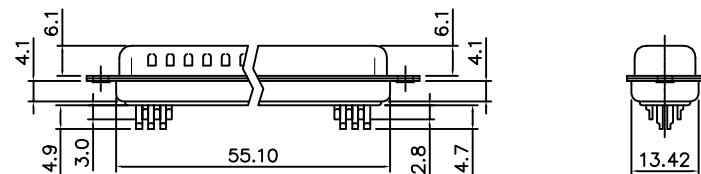
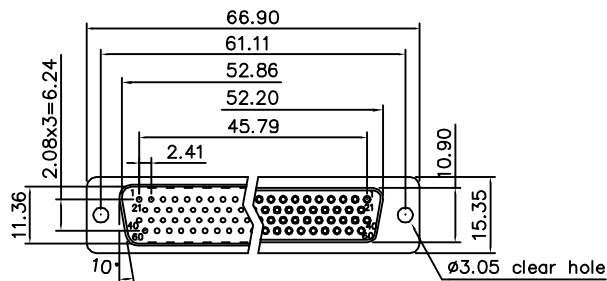
Product Specification

Material

Insulator : Glass-Filled Thermoplastic PBT, UL94V-0
 Contact : Brass
 Shell : Steel, 100u" Tin Over 50u" min Copper
 Clinch Nut : Brass, Nickel Plated
 Screwlock : Brass, Nickel Plated

Electrical

Contact Resistance : 20 milliohms
 Max at 1 AMP DC.
 Insulation Resistance : 1000
 megohms at 500 VDC
 Dielectric Withstanding Voltage :
 500 VAC/rms 60Hz for 1 minute
 Current Rating : 3 AMP
 Voltage Rating : 250 VAC/rms 60Hz



DO NOT SCALE DRAWING

DIMENSIONS: <input type="checkbox"/> MM [INCH] <input type="checkbox"/> INCH [mm] <input checked="" type="checkbox"/> MM ONLY	CAD GENERATED DRAWING, DO NOT MANUALLY UPDATE DRAWN BY AND DATE JUSTIN XING 10-20-05	<p>Y-S ELECTRONIC CO., LTD. No. 101, Sec. 1, Long-An Street, Lu-Chu, Taoyuan, Taiwan, R.O.C. TEL: +886-3-3609819 FAX: +886-3-3609817</p>
UNLESS OTHERWISE SPECIFIED, GENERAL TOLERANCE: DECIMALS ANGLES X. ±0.38 [0.015] X° ±3° .X ±0.25 [0.010] .X° ±1.0° .XX ±0.13 [0.005]	CHECKED BY AND DATE JUSTIN XING 10-20-05 APPROVED BY AND DATE KING CHIU 10-20-05 THIRD ANGLE PROJECTION 	
MATERIAL	SCALE: 1 : 1	SIZE: A3
FINISH	FILE NO.:	SHEET 1 OF 3

TITLE	104 SERIES HD D-SUB, SOLDER TYPE
DRAWING NO.	104-XXXXXXXXXXXX
REV	A

THE INFORMATION CONTAINED IN THIS DOCUMENT IS PROPRIETARY TO Y-S ELECTRONIC, ANY REPRODUCTION IN PART OR WHOLE WITHOUT PRIOR WRITTEN APPROVAL OR AUTHORIZATION OF Y-S ELECTRONIC IS STRICTLY PROHIBITED.

RoHS COMPLIANT

REVISIONS				
REV	ECN NO.	DESCRIPTION	APPROVED BY	DATE
A				

Ordering Information

104 - $\frac{XX}{a} \frac{X}{b} \frac{X}{c} \frac{X}{d} \frac{X}{e} \frac{X}{f} \frac{X}{g} \frac{X}{h} \frac{X}{i} \frac{X}{j} \frac{X}{k}$

a. No. Of Contacts:

- 15: 15 positions
- 26: 26 positions
- 44: 44 positions
- 62: 62 positions
- 78: 78 positions

b. Gender

- 1: Male
- 2: Female

c. Contact Plating

- 0: Gold flash selective gold
- 1: 5u" selective gold on contact
- 2: 10u" selective gold on contact
- 3: 15u" selective gold on contact
- 4: 30u" selective gold on contact
- 5: 50u" selective gold on contact
- 6: Gold flash full gold
- 7: Full tin

d. Shell plating :

- 0. Cr⁺³yellow chrome
- 1. Nickel
- 2. Tin(standard)
- 3. Cr⁺⁶yellow chrome
- 4. Gold flash
- 5. Tin, not dimple
- 6. Cr⁺⁶yellow chrome, dimple
- 7. Tin tab shell dimple
- 8. Special tin, dimple
- 9. Cr⁺³yellow chrome, dimple
- A. Nickel, mark UL & UCA
- B. Nickel, prevent gander
- C. Nickel, with dimple

e. Insulator Color

- 1: Blue
- 2: Black
- 3: White
- 4: Gray
- 5: PC99 blue
- 6: PC99 green
- 7: PC99 yellow

f. Rivetting Options :

- 0: Clear hole ϕ 3.05mm
- 1: Rivet front 5.9mm
- 2: Rear rivet, 5.9mm
- 3: Standoff+2 prong boardlock6.0*3.2mm
- A: Front rivet, 2.0mm
- B: Front rivet, 2.5mm
- C: Front rivet, 4.0mm
- D: Rear rivet, 2.0mm
- E: Rear rivet, 2.5mm
- F: Rear rivet, 4.0mm
- G: Front rivet, 5.0mm
- H: Rear rivet, 5.0mm

g. Flange Mounting Option :

- 0: ϕ 3.05mm clear hole
- 1: #4-40 threaded hole
- 2: #4-40 threaded hole with #4-40 unc(5*10mm)screwlock installed
- 3: #4-40 threaded hole with #4-40 unc(5*10mm)screwlock buld-packed
- 4: M3 threaded hole
- 5: #4-40 threaded hole with M3(5*10mm)screwlock installed
- 6: M2.6 threaded hole
- 7: #4-40 threaded hole with M2.6(5*10mm)screwlock installed
- 8: #4-40 insert(not through: 4.75*7.50mm)
- A: #4-40 threaded hole with #4-40 unc(5.8*10.8mm)screwlock installed
- B: #4-40 threaded hole with M3(5.8*10.8mm)screwlock installed

i. Contact Type

- 1: Stamped contact
- 2: Machined contact
- 3: Stamped contact, same height
- 4: Terminal same height, big edge cap same small edge cap sameness orientation

h. Ferrite :

- 0. Without ferrite
- 1. With ferrite


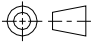
j. Insulator type

- N: Economical type

k. Pin Removal Options

- X: Pin #9 removed
- Y: Pin #4 and #9 removed
- Z: Pin #4, #9 and #11 removed
- B: Pin #17, #18, #38, #39 and #59 removed
- W: Pin #9, 12, 15 removed
- V: Pin #5, #9, #12, #15 removed
- U: Pin #5, 9 removed
- M: Pin #4, 5, 9 removed
- L: Pin #4 removed
- P: Pin #4, 11 removed

DO NOT SCALE DRAWING

DIMENSIONS: <input type="checkbox"/> MM [INCH] <input type="checkbox"/> INCH [mm] <input checked="" type="checkbox"/> MM ONLY	CAD GENERATED DRAWING, DO NOT MANUALLY UPDATE	 Y-S ELECTRONIC CO., LTD. No. 101, Sec. 1, Long-An Street, Lu-Chu, Taoyuan, Taiwan, R.O.C. TEL: +886-3-3609819 FAX: +886-3-3609817	
	UNLESS OTHERWISE SPECIFIED, GENERAL TOLERANCE: DECIMALS ANGLES X. \pm 0.38 [0.015] X° \pm 3° .X \pm 0.25 [0.010] .X° \pm 1.0° .XX \pm 0.13 [0.005]		DRAWN BY AND DATE JUSTIN XING 07-20-06
MATERIAL	CHECKED BY AND DATE JUSTIN XING 07-20-06	DRAWING NO. 104-XXXXXXXXXXXXX	
FINISH	APPROVED BY AND DATE KING CHIU 07-20-06 THIRD ANGLE PROJECTION 		REV A
SCALE: 1:1 SIZE: A3		FILE NO.:	SHEET 2 OF 3

THE INFORMATION CONTAINED IN THIS DOCUMENT IS PROPRIETARY TO Y-S ELECTRONIC, ANY REPRODUCTION IN PART OR WHOLE WITHOUT PRIOR WRITTEN APPROVAL OR AUTHORIZATION OF Y-S ELECTRONIC IS STRICTLY PROHIBITED.

RoHS COMPLIANT

REVISIONS				
REV	ECN NO.	DESCRIPTION	APPROVED BY	DATE
A				

f : 0		
f : 1		
f : 2		
f : A		
f : B		
f : C		
f : D		
f : E		

f : F		
f : G		
f : H		

CONSULT SALES OR FACTORY FOR OTHER MOUNTING STYLE OPTIONS

DO NOT SCALE DRAWING

DIMENSIONS: <input type="checkbox"/> MM [INCH] <input type="checkbox"/> INCH [mm] <input checked="" type="checkbox"/> MM ONLY		CAD GENERATED DRAWING, DO NOT MANUALLY UPDATE DRAWN BY AND DATE JUSTIN XING 10-20-05		Y-S ELECTRONIC CO., LTD. No. 101, Sec. 1, Long-An Street, Lu-Chu, Taoyuan, Taiwan, R.O.C. TEL: +886-3-3609819 FAX: +886-3-3609817	
UNLESS OTHERWISE SPECIFIED, GENERAL TOLERANCE: DECIMALS ANGLES .X ±0.38 [0.015] X° ±3° .X ±0.25 [0.010] .X° ±1.0° .XX ±0.13 [0.005]		CHECKED BY AND DATE JUSTIN XING 10-20-05 APPROVED BY AND DATE KING CHIU 10-20-05 THIRD ANGLE PROJECTION		TITLE 104 SERIES HD D-SUB, SOLDER TYPE	
MATERIAL FINISH				DRAWING NO. 104-XXXXXXXXXXXXX	
		SCALE: 1 : 1 SIZE: A3		REV A	
				FILE NO.: SHEET 3 OF 3	