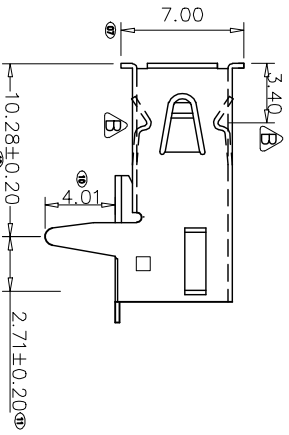
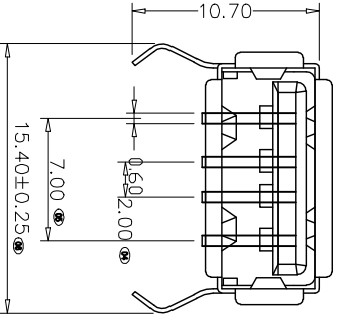
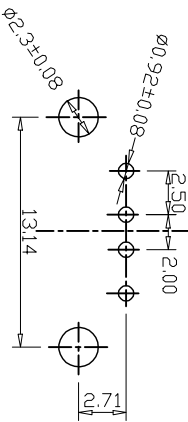
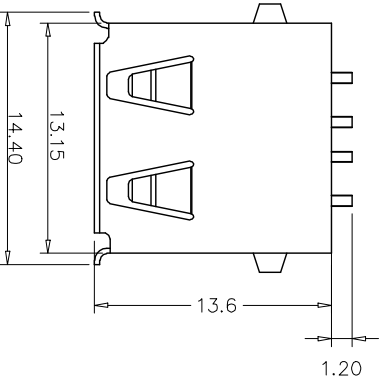


REV.	ZONE	ECN No.	DESCRIPTION	DESIGN	DATE
A			初版发行	易文豹	09.04.11



NOTES:

*MATERIAL: COMPLIANT ROHS STANDARD.

1. HOUSING: PBT+30%GF. UL94V-0. WHITE.
2. TERMINAL: COPPER ALLOY. T=0.25mm
3. FRONT SHELL: SPOC. MATTE ALLOYER.

*PLATING

1. TERMINAL: PLATED Au 15u" ON CONTACT AREA, TIN, 100~120U" ON OTHER AREA, NICKEL 50U" MIN UNDER ALLOYER.
2. FRONT SHELL: PLATED NICKEL 80U" MIN ALLOYER.

*ELECTRICAL CHARACTERISTICS

1. CONTACT CURRENT RATING: 1 AMPERES.
2. CONTACT RESISTANCE: 30 MILLIOHMS MAXIMUM.
3. INSULATION RESISTANCE: 1000 MEGOHMS MINIMUM AT DC 500V.
4. DIELECTRIC WITHSTANDING VOLTAGE: AC 500V

*MECHANICAL CHARACTERISTICS

1. INSERTION FORCE: 35N MAXIMUM.
2. WITHDRAWAL FORCE: 10N MINIMUM.

*ENVIRONMENTAL CHARACTERISTICS

1. OPERATING TEMPERATURE: -55°C TO +70°C.
- *THE DIMENSIONS ARE WITH "Ø", MUST BE CONTROL BY QC.

Unless otherwise specified tolerances are

X.		±0.38	
X.X	±0.30	DRAW NO.	DATE
X.XX	±0.25	DWN	09.04.11
X.XXX	±0.10	CHK	
X	±2.0"	P/N :	
X.X	±1.0"	APVD	

Third Angle Project		FINISH		UNIT SCALE		WEIGHT		REV		SHEET	
MATERIAL				mm		1:1		A		1 OF 1	