



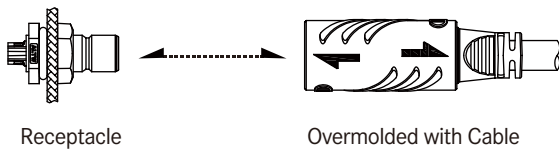
CATALOGUE

HS-Lok Connector



Range Overview

∟ Receptacle to Overmolded with Cable



Receptacle

Overmolded with Cable

∟ In Line



Overmolded with Cable

Overmolded with Cable

Specification

Identifications	Q8 Size
Mating Style	Push Lock
Description	Receptacle Overmolded with Cable
Current Rating / Data	2A, 5A, 5A+2A
Voltage Rating / Data	2A: 100Vdc 5A: 300Vac/Vdc 5A+2A: 5A, 300Vac; 2A, 100Vdc
Material	Connector Body (Housing): Thermoplastic, UL Recognized Contacts: Copper Alloy, Gold Plated Gasket & O-ring: Rubber, UL Recognized
Waterproof Rating	IP68 (mated, 1m water/24 hours)
Temperature Range	Receptacle: -40°C~105°C Overmolded with Cable: -40°C~105°C
Contact Resistance	10 mΩ Max.
Insulation Resistance	100 MΩ Min. at 500Vdc
Durability	2,000 cycles
Dielectric Withstand Voltage	1,000V plus 2 times the rated voltage / 1 minute
More to know	<ul style="list-style-type: none"> - Salt spray corrosion: 500 hours - Standard cable length: 01~99M - Torque (Nut For Receptacle): 6~8 kgf-cm - Tensile strength: 10 kgf

【Note】 Design and specification are subject to change without notice.

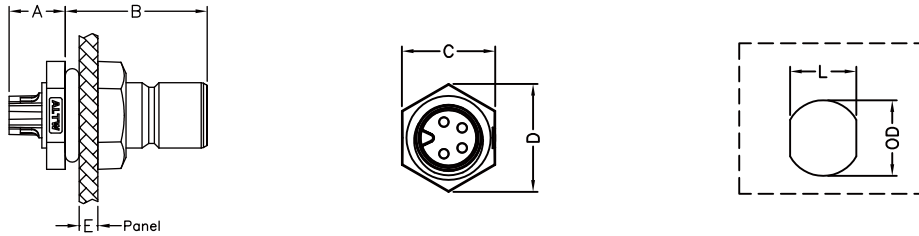
Ordering Information

	1	2	3	4	5	6	7	8	9	10
Specification / Current Rating										
> Q8 Size										
(8U) 2A										
(8D) 5A										
(8DU) 5A+2A										
Number of Contacts										
02, 03, 04, 05, 06										
e.g. (02) = 2 Contacts										
Connector Body (Style)										
> <u>For Receptacle</u>										
(P) Panel										
> <u>For Overmolded with Cable</u>										
(A) With Strain Relief										
Connector (Housing) Gender										
(M) Male Connector										
(F) Female Connector										
Contact Gender										
(M) Male										
(F) Female										
Assemble Style										
> <u>For Receptacle</u>										
(S) Solder Type										
> <u>For Overmolded with Cable</u>										
(M) Overmolded with Cable										
Mating Style										
(Q) Push Lock										
Backshell										
> <u>For Receptacle</u>										
(F) Front Hexagonal										
> <u>For Overmolded with Cable</u>										
(L) Straight										
Waterproof Rating										
(8) IP 68										
More Information										
> <u>For Receptacle</u>										
(001), (002)										
Without Cable :										
Different Versions										
> <u>For Overmolded with Cable</u>										
(□)+(■) : Cable Type + Cable Length										
e.g. (A01) = UL21996 Cable + 1M										
(□) : Cable Type										
(A) UL 21996, Balck, round cable										
(■) : Cable Length										
From 1M to 99M										
e.g. (01) = 1M										

Physical Dimension

Receptacle

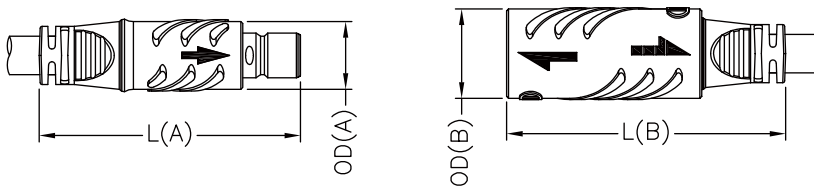
Front Fastened



Size	Current Rating (Code)	Contacts	A	B	C	D	E	L	OD
Q8	2A (U)	05	6.0	15.2	10.0	11.5	0.8~2.0	7.1	8.1
		06	8.8						
	5A (D)	02,03,04	6.0						
	5A+2A (DU)	02+03	6.0						

Unit: mm

Overmolded with Cable



Size	Current Rating (Code)	L		OD	
		Male (A)	Female (B)	Male (A)	Female (B)
Q8	2A (U)	41.0	43.8	10.6	14.0
	5A (D)				
	5A+2A (DU)				

Unit: mm

【Note】 Design and specification are subject to change without notice.

Contact Configuration

5A (Q8D)	5A (Q8D)	5A (Q8D)	2A (Q8D)	2A (Q8D)	5A+2A (Q8DU)
2 Pin (02)	3 Pin (03)	4 Pin (04)	5 Pin (05)	6 Pin (06)	2+3 Pin (05)
Male Connector, Male Contact					
R C	R C	R C	R C	R C	R C
Female Connector, Female Contact					
C	C	C	C	C	C
Wire Color Identification for Overmolded with Cable Style					
1 = White 2 = Black	1 = White 2 = Black 3 = Green	1 = White 2 = Black 3 = Red 4 = Blue	1 = White 2 = Black 3 = Red 4 = Blue 5 = Green	1 = White 2 = Black 3 = Red 4 = Blue 5 = Green 6 = Brown	1 = White 2 = Black 3 = Red 4 = Blue 5 = Green 6 = Brown

R: Receptacle
C: Overmolded with cable
F: Field installable


Contact Number: 2
 e.g. 2 contacts (02)

Connector (Housing) Gender: 4
 Male(M) or Female(F)

Connector Gender: 5
 Male(M) or Female(F)

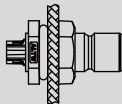

More to Choose: 6

- Solder (S)
 - Solder Cup





Find Our Standard Products

Q8 Size > Receptacle and Mating Pair

<ul style="list-style-type: none"> • Male Connector (Housing) • Male Contacts • Push Lock 		Field Installable>>>	Overmolded with Cable
			
Current Rating (Code)	Contacts ②	Male Connector (M) Male Contacts (M)	Female Connector (F) Female Contacts (F)
2A (U)	05, 06	Q8U-② PMMS-QF8001	Q8U-② AFFM-QL8A XX *
5A (D)	02, 03, 04	Q8D-② PMMS-QF8001	Q8D-② AFFM-QL8A XX *
5A+2A (DU)	02+03	Q8DU-② PMMS-QF8001	Q8DU-② AFFM-QL8A XX *

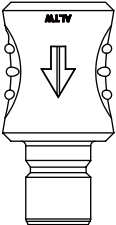
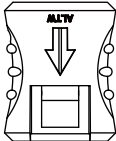
* XX: Choose the cable length from 01~99m

Q8 Size > In-Line

<ul style="list-style-type: none"> • Female Connector (Housing) • Female Contacts • Push Lock 		Overmolded with Cable>>>	Overmolded with Cable
			
Current Rating (Code)	Contacts ②	Male Connector (M) Male Contacts (M)	Female Connector (F) Female Contacts (F)
2A (U)	05, 06	Q8U-② AMMM-QL8A XX *	Q8U-② AFFM-QL8A XX *
5A (D)	02, 03, 04	Q8D-② AMMM-QL8A XX *	Q8D-② AFFM-QL8A XX *
5A+2A (DU)	02+03	Q8DU-② AMMM-QL8A XX *	Q8DU-② AFFM-QL8A XX *

* XX: Choose the cable length from 01~99m

Accessories > Waterproof Cap

		For female connector	For male connector	
				
Size	Mating Style	Mating Pair (Gender)		P/N
Q8 Series	Push Lock	Male		CAP-WBBMQMA1
		Female		CAP-WBBFQCA1

[Note] Design and specification are subject to change without notice.

Amphenol LTW Technology Co., Ltd.

5F-3, No.51, Sec.4, Zhongyang Rd., Tucheng Dist., New Taipei City 236, Taiwan
Telephone: +886-2-77416888 Fax: +886-2-77416999
www.amphenolltw.com

Kunshan Factory

No. 62, DaTong Road, Development Zone, Kunshan City, JiangSu Province, 215333 China
Telephone: +86-512-5761-0501
Fax: : +86-512-5761-0515

For further information, please contact :

Sales & Marketing Department | Email : sales@ltw-tech.com