

Descrição item:

CONECTOR CIRCULAR 6 PINOS FÊMEA IP67

DATA:

13/11/15

REV.

00

PÁG.

1/2

Part Number CLIENTE:

Part Number SECCON:

LTWAGBD-06PMFS-LC7001

Número de contatos: 06 pinos

Gênero do Conector: Macho

Gênero do Contato/Pino: Fêmea

1



2



3



4

5

6

Descrição item:

CONECTOR CIRCULAR 6 PINOS FÊMEA IP67

DATA:

13/11/15

REV.

00

PÁG.

2/2

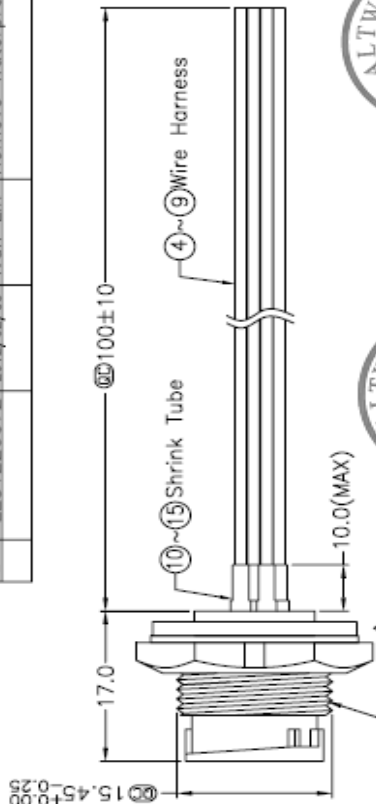
Part Number CLIENTE:

Part Number SECCON:

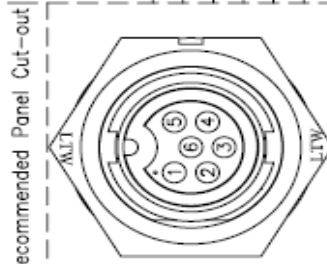
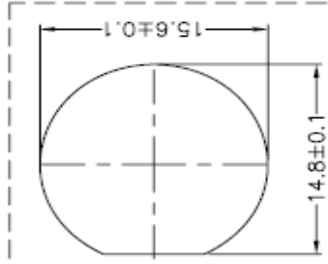
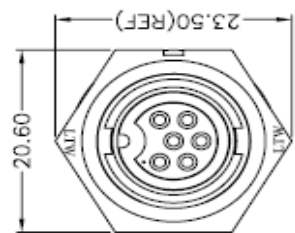
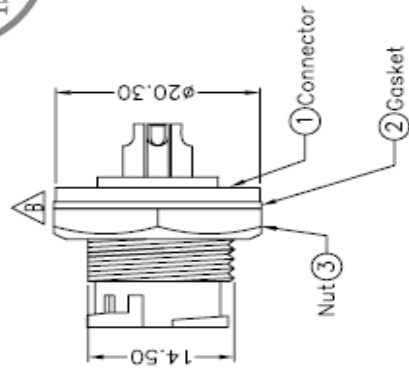
LTWAGBD-06PMFS-LC7001

THIS DOCUMENT IS SUBJECT TO CHANGE WITHOUT NOTICE. IT IS CONFIDENTIAL AND A PROPERTY OF Amphenol LTW. DISCLOSURE TO THIRD PARTY HAS TO BE AUTHORIZED BY Amphenol LTW.

REV.	REV. NO.	DATE	DESCRIPTION
A	Initial Release	2011/08/25	Ivan Lin Change Rev.02 To Rev.A
B	LE31220072	2012/02/03	Ivan Lin Remove Waterproof_Cap



- Note:
- * Important Dimension To Check.
 - * Waterproof Rate: IP67
 - * Connector: Nylon+GF, Black.
 - * Female Pin: Copper Alloy, Gold Plated
 - * Nut: Nylon+GF, Black.
 - * Gasket: EPDM, Black.
 - * Use With Waterproof Cap Or Dust Cap
 - * Panel Thickness Max: 3.5mm
 - * Use Without Waterproof Cap Or Dust Cap
 - * Panel Thickness Max: 5.0mm
 - * Wire Harness: UL1007 22AWG*6PCS



Wire Color	Pin Out	Conn.
Yellow	6	
Orange	5	
Brown	4	
Green	3	
Red	2	
Black	1	

ITEM NO	AGBD-06PMFS-LC7001	DATE	2012/02/03
DRAWN BY	Ivan Lin	DATE	2012/02/03
CHECKED BY	Tarry	DATE	2012/02/03
APPROVED BY	Lion	DATE	2012/02/03
PWG NO	AGBD-06PMFS-LC7001		
CUSTOMER	L1002133		

Amphenol LTW
安費諾亮泰企業股份有限公司

UNIT:mm	TITLE	CIRCULAR,STANDARD,PANEL
TOLERANCE	SCALE	BD-06PMFS
X ±0.25	Free	
XX ±0.1	SHEET	1 OF 1
XXX ±0.05	REV.	B A4
ANGLES ±1		Inspection Item

B PW0702-01-01A2