



## ESPECIFICAÇÃO TÉCNICA 3D-161205XX SC

### Cadastro do Produto

**Nome:** CORDÃO ÓPTICO SC (LSZH)

**Código:** 3D-161205XX

**Marca:** Seccon

**Descrição:** Cordão Óptico Duplex com conectores SC x SC e bitola de 2,0 mm.  
Tratamento LSZH

3D-16120510 – Multi Modo (MM 50/125) 1,50M, na cor Amarela

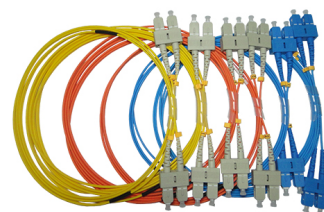
3D-16120519 – Multi Modo (MM 50/125) 2,50M, na cor Amarela

3D-16120511 – Multi Modo (MM 62,5/125) 1,50M, na cor Laranja


3D-16120520 – Multi Modo (MM 62,5/125) 2,50M, na cor Laranja


3D-16120512 – Mono Modo(SM 9/125) 1,50M, na cor Azul

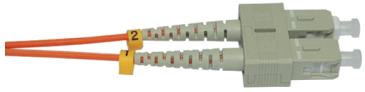
3D-16120521 – Mono Modo(SM 9/125) 2,50M, na cor Azul





### Especificações:


CABLE TESTING RESULT				
<b>Cable Type</b>	3D-16120510 PATCH CORD DUPLEX SC X SC-UPC MM-50/125 LSZH YELLOW JACKET 2.0MM, 1,5M			
	<b>Cable A</b>		<b>Cable B</b>	
	<b>Connector 1</b>	<b>Connector 2</b>	<b>Connector 1</b>	<b>Connector 2</b>
<b>Insertion Loss</b>	0.07 dB	0.14 dB	0.07 dB	0.07 dB
<b>Return Loss</b>	36.6 dB	35.5 dB	35.1 dB	36.9 dB

CABLE TESTING RESULT				
<b>Cable Type</b>	3D-16120519 PATCH CORD DUPLEX SC X SC-UPC MM-50/125 LSZH YELLOW JACKET 2.0MM, 1,5M			
	<b>Cable A</b>		<b>Cable B</b>	
	<b>Connector 1</b>	<b>Connector 2</b>	<b>Connector 1</b>	<b>Connector 2</b>
<b>Insertion Loss</b>	0.05 dB	0.06 dB	0.16 dB	0.07 dB
<b>Return Loss</b>	35.9 dB	36.7 dB	36.2 dB	35.9 dB

<b>CABLE TESTING RESULT</b>				
<b>Cable Type</b>	3D-16120511 PATCH CORD DUPLEX SC X SC-UPC MM-62.5/125 LSZH ORANGE JACKET 2.0MM, 1.5M			
	<b>Cable A</b>		<b>Cable B</b>	
	<b>Connector 1</b>	<b>Connector 2</b>	<b>Connector 1</b>	<b>Connector 2</b>
<b>Insertion Loss</b>	0.14 dB	0.13 dB	0.09 dB	0.06 dB
<b>Return Loss</b>	36.0 dB	35.2 dB	36.4 dB	36.2 dB

<b>CABLE TESTING RESULT</b>				
<b>Cable Type</b>	3D-16120520 PATCH CORD DUPLEX SC X SC-UPC MM-62.5/125 LSZH ORANGE JACKET 2.0MM, 2.5M			
	<b>Cable A</b>		<b>Cable B</b>	
	<b>Connector 1</b>	<b>Connector 2</b>	<b>Connector 1</b>	<b>Connector 2</b>
<b>Insertion Loss</b>	0.13 dB	0.10 dB	0.06 dB	0.11 dB
<b>Return Loss</b>	35.1 dB	36.0 dB	35.0 dB	36.2 dB

<b>CABLE TESTING RESULT</b>				
<b>Cable Type</b>	3D-16120512 PATCH CORD DUPLEX SC X SC-UPC SM-9/125 LSZH BLUE JACKET 2.0MM, 1.5M			
	<b>Cable A</b>		<b>Cable B</b>	
	<b>Connector 1</b>	<b>Connector 2</b>	<b>Connector 1</b>	<b>Connector 2</b>
<b>Insertion Loss</b>	0.17 dB	0.09 dB	0.06 dB	0.09 dB
<b>Return Loss</b>	56.3 dB	57.0 dB	56.1 dB	56.4 dB

<b>CABLE TESTING RESULT</b>				
<b>Cable Type</b>	3D-16120521 PATCH CORD DUPLEX SC X SC-UPC SM-9/125 LSZH BLUE JACKET 2.0MM, 2.5M			
	<b>Cable A</b>		<b>Cable B</b>	
	<b>Connector 1</b>	<b>Connector 2</b>	<b>Connector 1</b>	<b>Connector 2</b>
<b>Insertion Loss</b>	0.17 dB	0.08 dB	0.09 dB	0.09 dB
<b>Return Loss</b>	55.2 dB	56.2 dB	56.9 dB	55.2 dB

