



Cable ID: P8-001-22E 1

Test Limit: TIA Cat 6 Channel

Limits Version: V7.6

Date / Time: 05/23/2024 11:21:21 AM

Operator: DANIEL SASAKI

Headroom 20.5 dB (NEXT 3,6-4,5)

Cable Type: Cat 6 U/UTP

NVP: 69.0%

Main: Versiv

S/N: 19270428

Software Version: V6.7 Build 1

Adapter: DSX-5000 (DSX-CHA004)

S/N: 4731741

Test Summary: PASS

Remote: Versiv

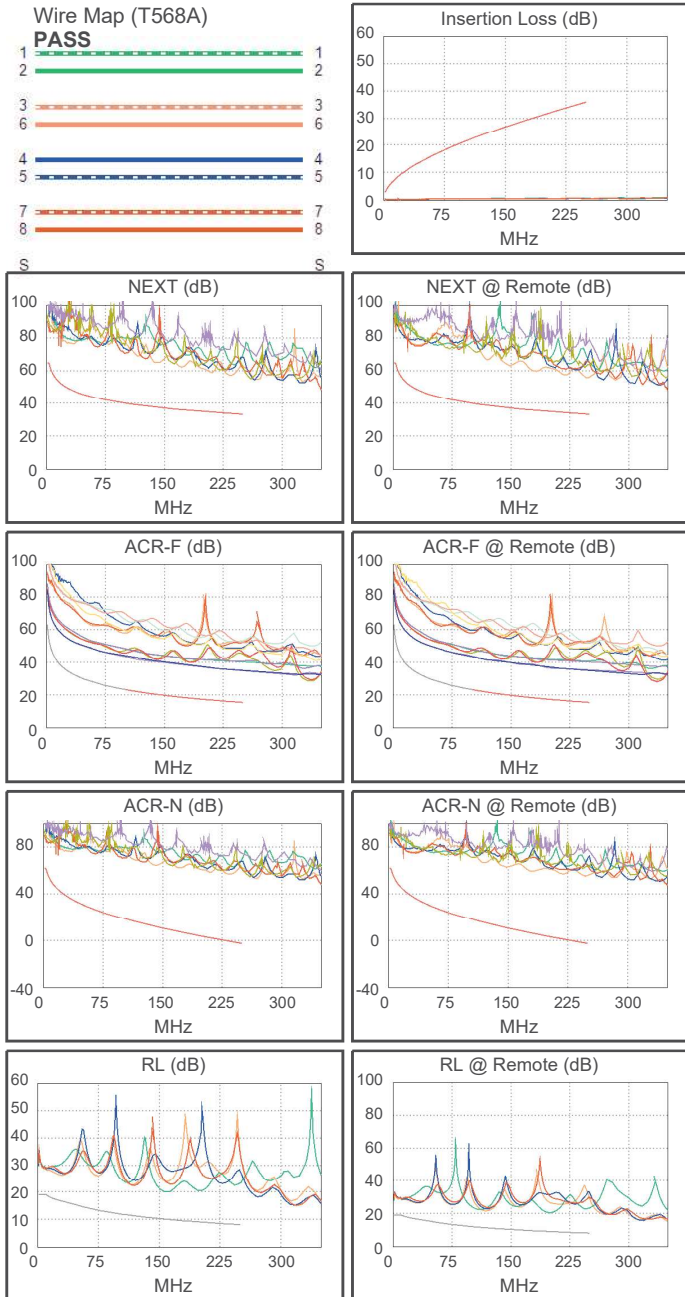
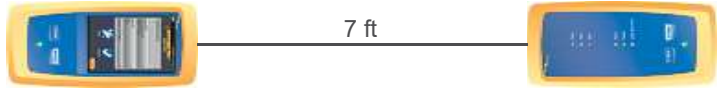
S/N: 19290091

Software Version: V6.7 Build 1

Adapter: DSX-5000R (DSX-CHA004)

S/N: 4731095

Length (ft), Limit 328	[Pair 3,6]	7
Prop. Delay (ns), Limit 555	[Pair 1,2]	11
Delay Skew (ns), Limit 50	[Pair 1,2]	1
Resistance (ohms)	[Pair 7,8]	0.33
Insertion Loss Margin (dB)	[Pair 1,2]	34.1
Frequency (MHz)	[Pair 1,2]	235.5
Limit (dB)	[Pair 1,2]	34.7



Worst Case Margin Worst Case Value

PASS	MAIN	SR	MAIN	SR
Worst Pair	3,6-4,5	3,6-4,5	1,2-3,6	1,2-3,6
NEXT (dB)	20.5	22.0	23.9	22.6
Freq. (MHz)	3.3	2.8	236.0	248.0
Limit (dB)	64.5	65.0	33.5	33.2
Worst Pair	3,6	3,6	3,6	3,6
PS NEXT (dB)	20.9	23.3	24.3	24.4
Freq. (MHz)	3.3	3.3	230.5	248.0
Limit (dB)	62.0	62.0	30.8	30.2

PASS	MAIN	SR	MAIN	SR
Worst Pair	7,8-3,6	3,6-7,8	7,8-3,6	3,6-7,8
ACR-F (dB)	18.7	18.8	18.9	19.0
Freq. (MHz)	240.0	240.0	245.5	243.5
Limit (dB)	15.7	15.7	15.5	15.5
Worst Pair	3,6	3,6	3,6	3,6
PS ACR-F (dB)	20.6	20.5	21.4	21.0
Freq. (MHz)	190.5	186.0	241.0	234.0
Limit (dB)	14.7	14.9	12.6	12.9

N/A	MAIN	SR	MAIN	SR
Worst Pair	3,6-4,5	3,6-4,5	1,2-3,6	1,2-3,6
ACR-N (dB)	23.7	25.3	58.1	57.9
Freq. (MHz)	2.6	2.8	236.0	248.0
Limit (dB)	61.7	61.6	-1.2	-2.6
Worst Pair	3,6	3,6	3,6	3,6
PS ACR-N (dB)	24.4	26.5	58.1	59.7
Freq. (MHz)	3.3	2.4	230.5	248.0
Limit (dB)	58.4	58.9	-3.5	-5.6

N/A	MAIN	SR	MAIN	SR
Worst Pair	1,2	3,6	3,6	3,6
RL (dB)	9.4	8.5	9.9	11.4
Freq. (MHz)	10.8	1.0	159.5	201.0
Limit (dB)	18.8	19.0	10.0	9.0

Compliant Network Standards:
 10BASE-T 100BASE-TX 100BASE-T4
 1000BASE-T 2.5GBASE-T 5GBASE-T
 ATM-25 ATM-51 ATM-155
 100VG-AnyLan TR-4 TR-16 Active
 TR-16 Passive



Cable ID: P8-001-22E 2

Test Limit: TIA Cat 6 Channel

Limits Version: V7.6

Date / Time: 05/23/2024 11:24:00 AM

Operator: DANIEL SASAKI

Headroom 18.9 dB (NEXT 3,6-7,8)

Cable Type: Cat 6 U/UTP

NVP: 69.0%

Main: Versiv

S/N: 19270428

Software Version: V6.7 Build 1

Adapter: DSX-5000 (DSX-CHA004)

S/N: 4731741

Test Summary: PASS

Remote: Versiv

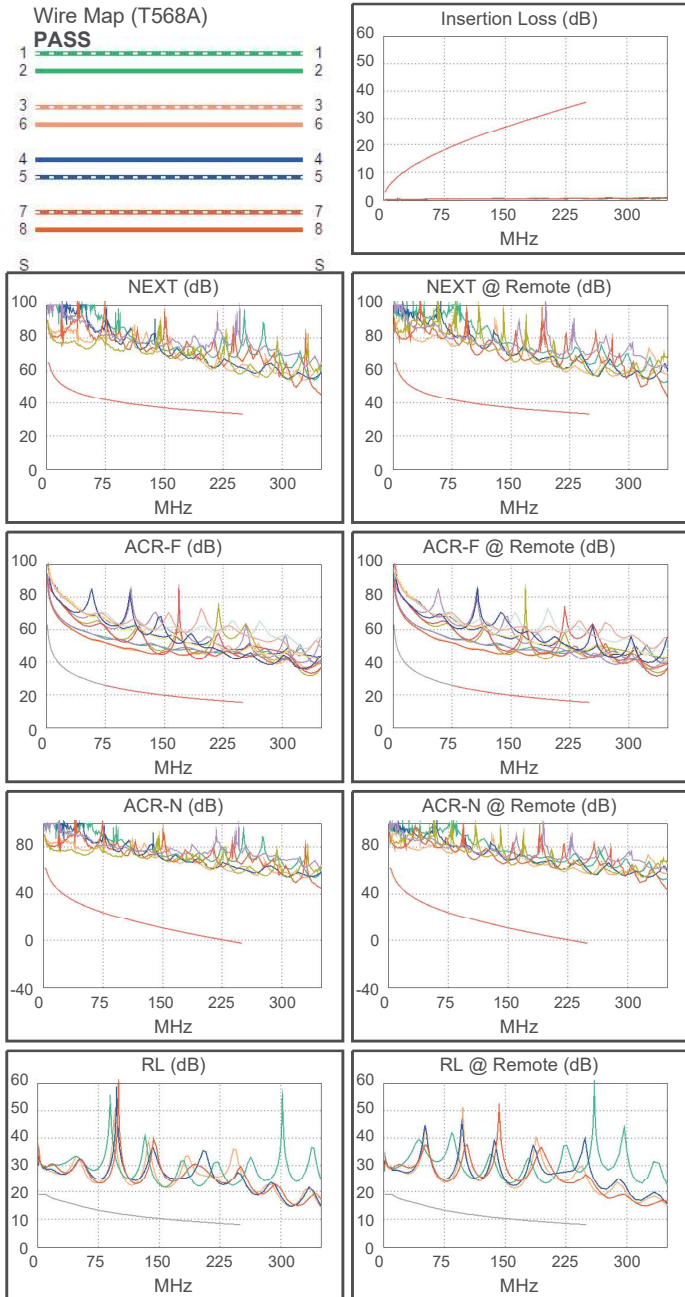
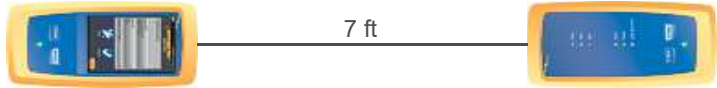
S/N: 19290091

Software Version: V6.7 Build 1

Adapter: DSX-5000R (DSX-CHA004)

S/N: 4731095

Length (ft), Limit 328	[Pair 7,8]	7
Prop. Delay (ns), Limit 555	[Pair 1,2]	11
Delay Skew (ns), Limit 50	[Pair 1,2]	1
Resistance (ohms)	[Pair 4,5]	0.33
Insertion Loss Margin (dB)	[Pair 1,2]	34.2
Frequency (MHz)	[Pair 1,2]	236.5
Limit (dB)	[Pair 1,2]	34.8



Worst Case Margin Worst Case Value

PASS	MAIN	SR	MAIN	SR
Worst Pair	3,6-7,8	3,6-4,5	3,6-7,8	1,2-3,6
NEXT (dB)	18.9	19.0	24.2	25.4
Freq. (MHz)	3.6	3.9	248.0	250.0
Limit (dB)	63.7	63.3	33.2	33.1
Worst Pair	3,6	3,6	3,6	3,6
PS NEXT (dB)	17.5	19.3	25.6	25.5
Freq. (MHz)	3.3	3.3	248.0	250.0
Limit (dB)	62.0	62.0	30.2	30.2

PASS	MAIN	SR	MAIN	SR
Worst Pair	1,2-3,6	1,2-3,6	4,5-3,6	3,6-7,8
ACR-F (dB)	24.4	24.4	24.6	26.4
Freq. (MHz)	135.0	135.5	195.5	240.5
Limit (dB)	20.7	20.6	17.4	15.6
Worst Pair	3,6	3,6	3,6	1,2
PS ACR-F (dB)	25.0	25.7	26.4	27.8
Freq. (MHz)	143.0	139.5	246.0	250.0
Limit (dB)	17.2	17.4	12.4	12.3

N/A	MAIN	SR	MAIN	SR
Worst Pair	3,6-7,8	3,6-4,5	3,6-7,8	1,2-3,6
ACR-N (dB)	22.6	22.6	59.6	60.8
Freq. (MHz)	3.6	3.1	248.0	250.0
Limit (dB)	59.9	61.2	-2.6	-2.8
Worst Pair	3,6	3,6	3,6	3,6
PS ACR-N (dB)	21.0	22.8	60.9	61.0
Freq. (MHz)	3.3	3.3	248.0	250.0
Limit (dB)	58.4	58.4	-5.6	-5.8

N/A	MAIN	SR	MAIN	SR
Worst Pair	1,2	3,6	1,2	1,2
RL (dB)	9.2	8.8	11.5	11.4
Freq. (MHz)	10.6	1.0	160.5	162.5
Limit (dB)	18.9	19.0	9.9	9.9

Compliant Network Standards:
 10BASE-T 100BASE-TX 100BASE-T4
 1000BASE-T 2.5GBASE-T 5GBASE-T
 ATM-25 ATM-51 ATM-155
 100VG-AnyLan TR-4 TR-16 Active
 TR-16 Passive